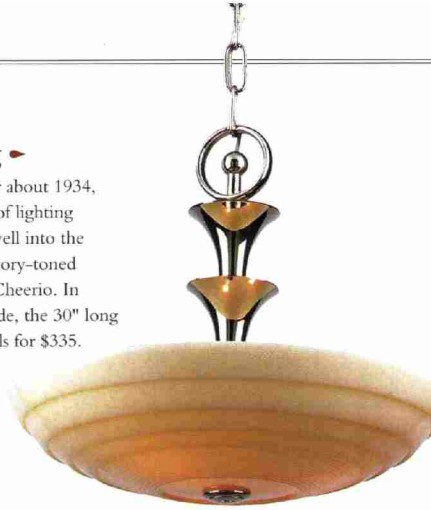


Cheery Lighting ▶

Introduced by Lightolier about 1934, the Blairmont is typical of lighting designs that carried on well into the 1940s. The distinctive ivory-toned custard glass was called Cheerio. In polished nickel with shade, the 30" long Streamline pendant retails for \$335.

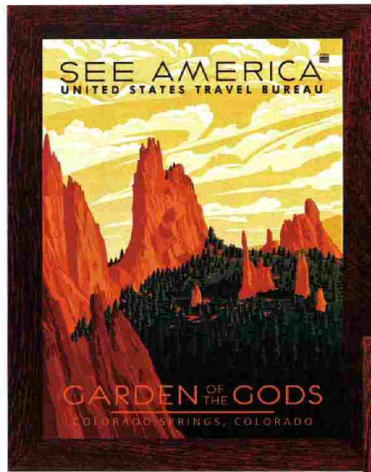
From Rejuvenation,
 (888) 401-1900,
 rejuvenation.com



Back to the Forties

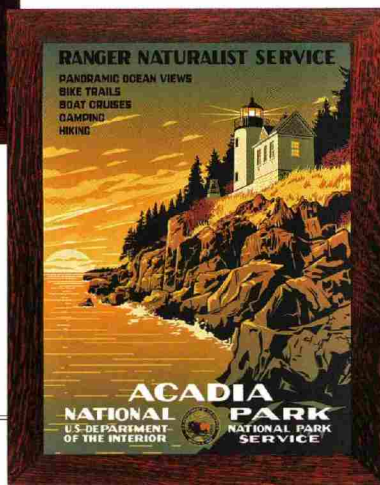
Flowers for Your Room ▶

The Anna Maria paper is part of the Honfleur collection, printed on surface-print machines that produce comfortably scaled patterns intended for use on all four walls. Suitable for Colonial Revival homes, the papers are sold to the trade from Sanderson, (800) 894-6185, sanderson-uk.com



See Vintage America ▶

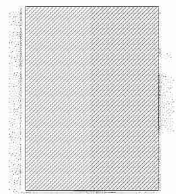
Products of the WPA in the 1930s, National Park posters no doubt hung on walls well into the next decade. Two new high quality reproductions are \$35 each (\$125 with a Dard Hunter Studio quartersawn oak frame). From Ford Craftsman Studios, (877) 204-9961, fordcraftsmanstudios.com



Engineered Comfort ▶

With its wide-body styling and slightly flared rolled arms, the Chesapeake has 1940s comfort written all over it. The chair measures 42" wide x 37" deep x 38" high. Price will vary, depending on your choice of more than 1,200 fabrics and leathers. From Stickley, (315) 682-5500, stickley.com

Lots more in the Design Center at
 designcentersourcebook.com





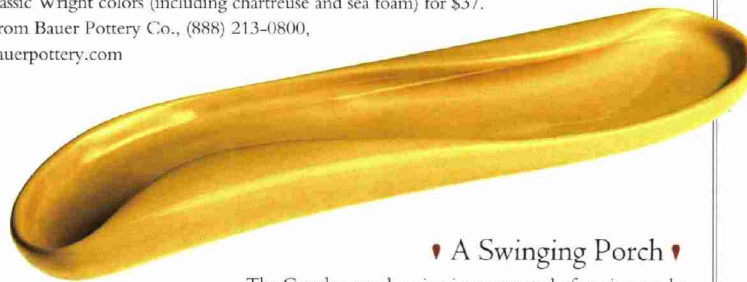
Post War Color

From the late 1940s, Teapot and Scallop Trim are two of several hand-printed papers from the Post War Era collection. Teapot is sold in a 30-square-foot roll (\$92). Scallop Trim is \$30 per yard. Both from Bradbury & Bradbury, (707) 746-1900, bradbury.com



Modern Rebirth

The celery tray is one of 14 newly issued originals from Russel Wright's iconic American Modern line of the 1930s and '40s. The distinctive endless-edge tray comes in classic Wright colors (including chartreuse and sea foam) for \$37. From Bauer Pottery Co., (888) 213-0800, bauerpottery.com



A Swinging Porch

The Camden porch swing is constructed of marine-grade Sunbrella fabric with solid brass clews and grommets. With a 4" thick foam cushion, the 30" x 74" size is large enough for porch sleeping. In stripes or solids, it's \$675. From Penobscot Bay Porch Swings, (207) 729-1616, penobscotbayporchswings.com

Streamline Fridge

The compact version of the Northstar Fridge holds 11 cubic feet of groceries. It measures 24" wide x 62" high x 32½" deep. In red, black, white, and a slew of pastels, prices begin at \$1,995. From Elmira Stove Works, elmirastoveworks.com



Swinging Spout

This lever-handle wall-mount kitchen faucet with removable soap tray is a 20th-century kitchen classic. In chrome, it comes with fixed 8" centers, or adjustable centers (6½" to 9¾"). The faucet sells for about \$54. From Signature Hardware, (866) 855-2284, signaturehardware.com

