

JERICO KNOB/PULL

CALIFORNIA PROPOSITION 65 WARNING: This product can expose you to chemicals including Lead which is known to the State of California to cause cancer and birth defects or other reproductive harm. For more information go to www.P65warnings.ca.gov.

PARTS INCLUDED

Knob: 1 pc 8-32 1" Truss head screw, 1 pc 8-32 1-1/2" Truss head screw

Pull: 2 pcs oval head slotted wood screws

2 pcs oval head 5/8" slotted machine screws

2 pcs oval head 1.25" slotted machine screws

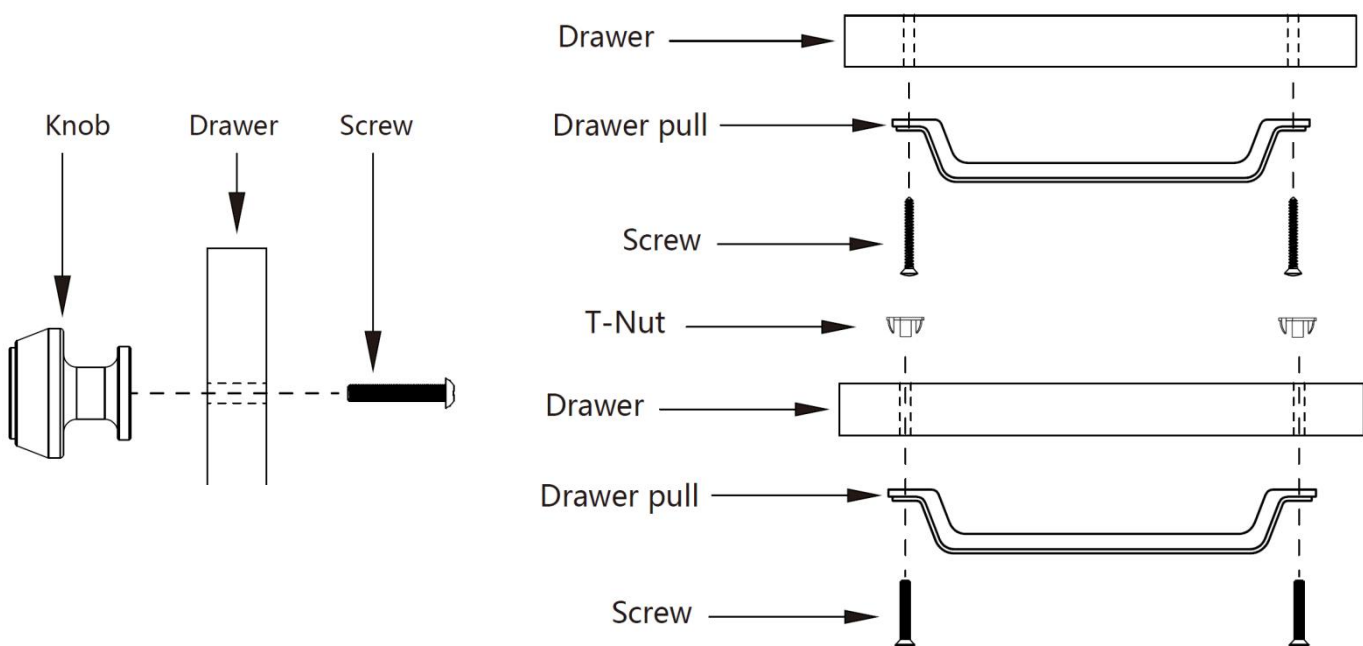
2 pcs T-nuts

MOUNTING INSTRUCTIONS

This knob/Pull includes hardware that is designed to mount securely to drawer-fronts or cabinet doors that have a thickness range between 1/2" and 1-1/2" inches. If you drawer- front or door is thicker or thinner than this range, please obtain the appropriate size screw from your local hardware store.

Knob: Carefully determine a desired knob location and use a 3/16 inch diameter drill bit and an appropriate drill to make the hole through the drawer/door front. Insert the appropriate length screw. Attach the knob onto the protruding threads of the screw and rotate clockwise until snug. Use a screwdriver to tighten the screw while gently holding the knob.

Pull: Carefully determine a desired pull location, Use slotted head screwdriver to install wood screw until resistance
For drawer with pre-drilled holes: Determine proper center to center hole matching your pulls, hammer 2pcs T nuts on the interior of the drawer into existing hole, place pull over the holes on the exterior side of the drawer, Use slotted head screwdriver to tighten appropriate length screw.



CLEANING INSTRUCTIONS

To maintain and protect the luster of all products, clean with a soft, damp cloth only.