

HOOK SINGLE/DOUBLE/TRIPLE/RACK 6 HOOKS

CALIFORNIA PROPOSITION 65 WARNING: This product can expose you to chemicals including Lead which is known to the State of California to cause cancer and birth defects or other reproductive harm. For more information go to www.P65warnings.ca.gov.

PARTS INCLUDED

Hook	1 pc
Mounting Screws	2 pcs (4 pcs for triple and rack 6 hook)
Drywall Anchors	2 pcs (4 pcs for triple and rack 6 hook)

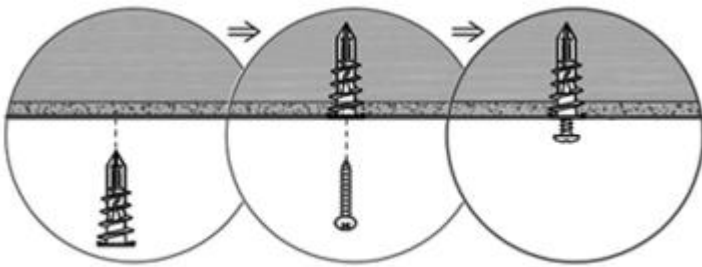
The maximum load capacity for hook single is 5LBS (2.3KGS)

The maximum load capacity for hook double is 17.5LBS (8KGS)

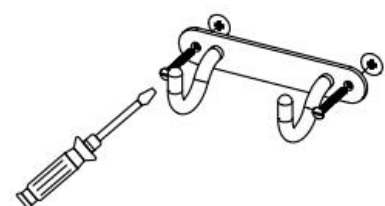
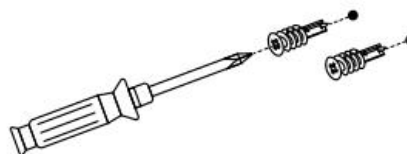
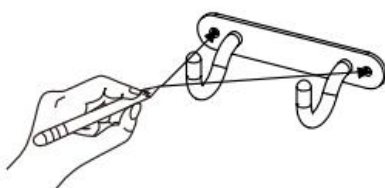
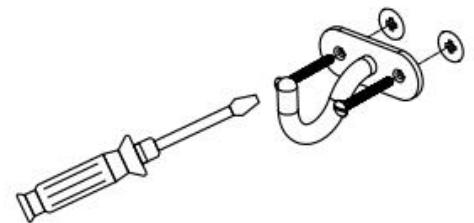
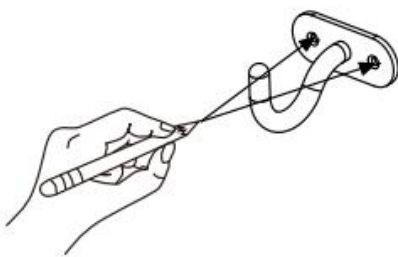
The maximum load capacity for hook triple is 20LBS (9KGS)

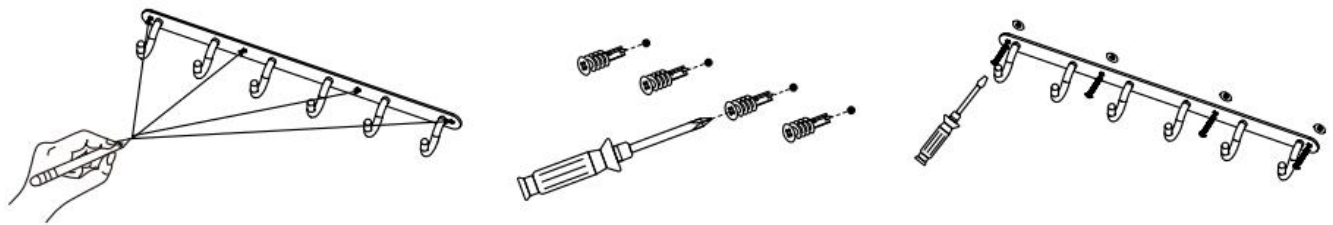
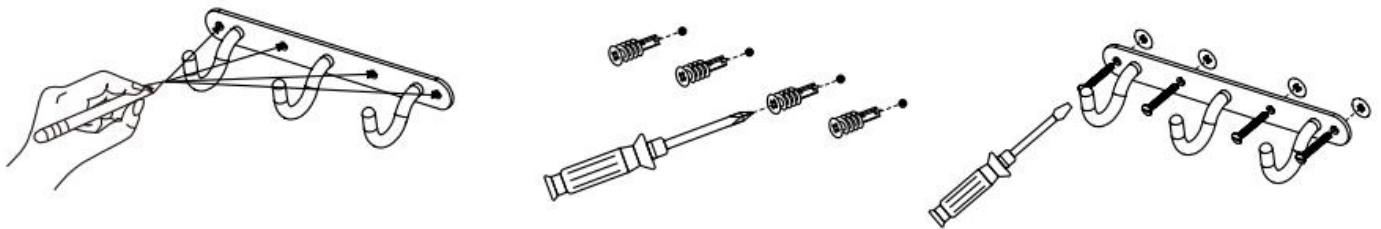
The maximum load capacity for hook rack 6 hooks is 40LBS (18KGS)

For non-stud mounting:

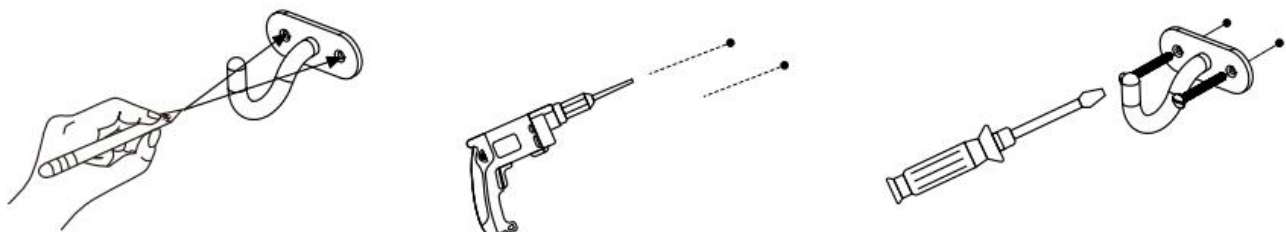
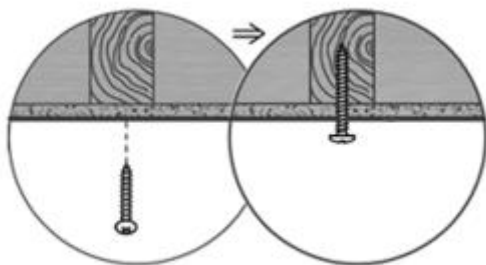


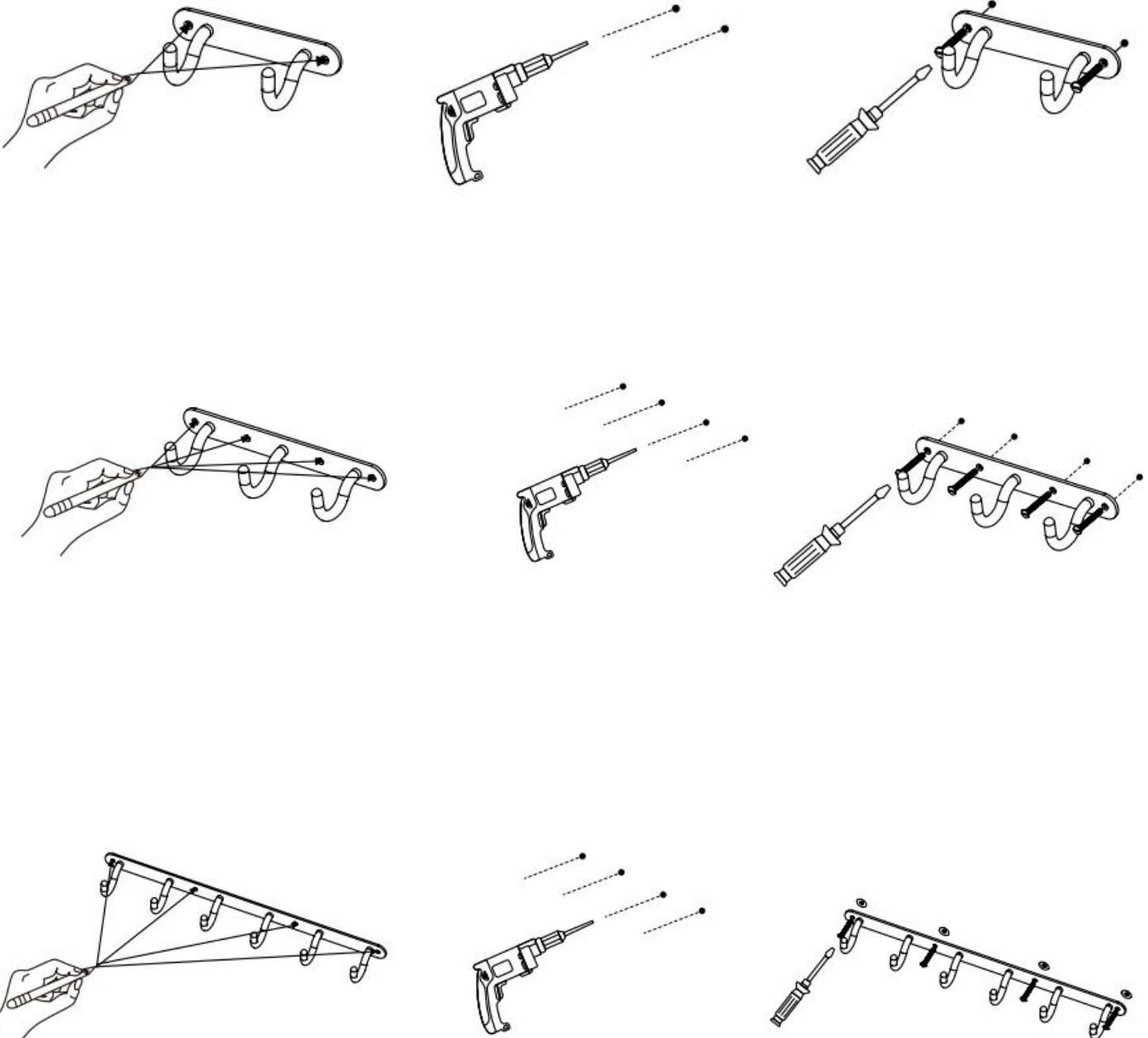
Tips:
The anchor is self-drillable. No pilot hole required.





For stud mounting:





CLEANING INSTRUCTIONS

To maintain and protect the luster of all products, clean with a soft, damp cloth only.