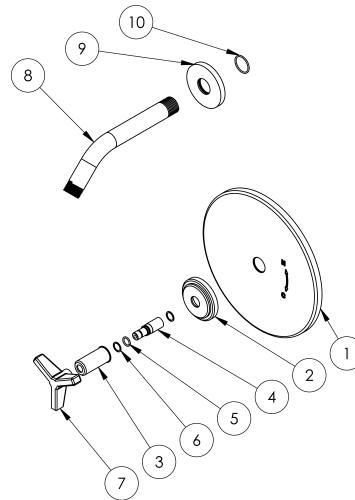


FEATURES

- Diaphragm cartridge maintains water temperature within $\pm 2^\circ$
- Compensates for water pressure fluctuations preventing scalding
- Flow rate: 5-7 gpm at 80 psi
- Solid brass construction
- Warranty:
 - Limited lifetime warranty (residential use)
 - One year (commercial use)
- Standard finishes:
 - polished chrome
 - satin nickel
 - polished nickel
 - rustic brass
- Listed by IAPMO, CSA, NSF, & other municipalities
- Shipping weight (lbs.): 15.7
- Shipping dimensions(in.): 12 x 22.5 x13

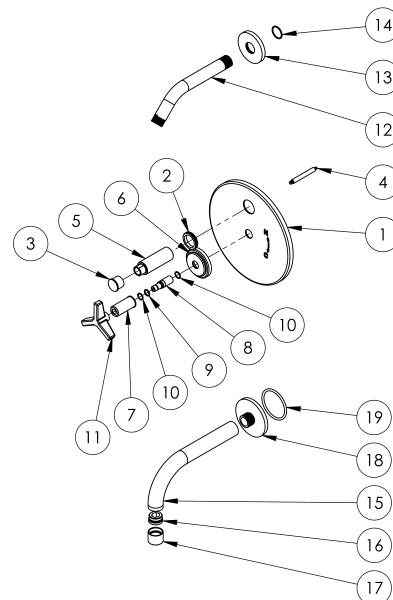
Shower Kit:

ITEM NO.	PART NUMBER	QTY.
1	SS-PFP930	1
2	BL14-ESC	1
3	BL14-POST	1
4	TR24-STEM	1
5	AS568 - 012	1
6	.497x.391x.02-PLSTC-WSHR	2
7	BL15-CRSS-HNDL	1
8	SS-403AF-ARM	1
9	SS-403AF-FLNG	1
10	AS568 - 019	1



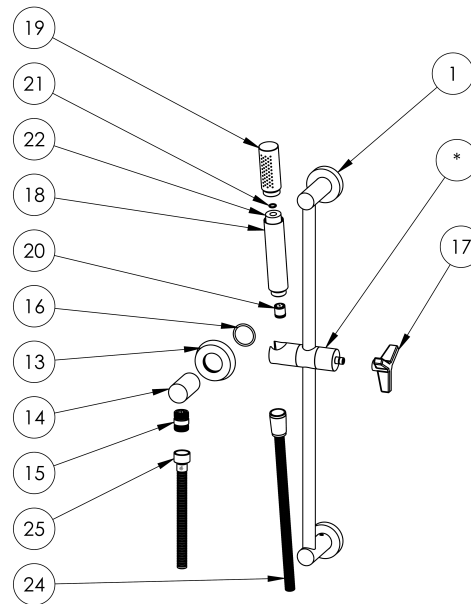
Shower/Tub Kit:

ITEM NO.	PART NUMBER	QTY.
1	SS-PFP936	1
2	SS-PB85-DIV-GRMMT	1
3	SS-PB85-DIV-KNOB	1
4	SS-PB85-DIV-KNOB-ADAP	1
5	SS-PB85-DIV-STEM	1
6	BL14-ESC	1
7	BL14-POST	1
8	TR24-STEM	1
9	AS568 - 012	1
10	.497x.391x.02-PLSTC-WSHR	2
11	BL15-CRSS-HNDL	1
12	SS-403AF-ARM	1
13	SS-403AF-FLNG	1
14	AS568 - 019	1
15	TBSPT-22-SPT	1
16	TBSPT-22-AERTR-ADAP	1
17	TBSPT-24-AERTR-SHLL	1
18	TBSPT-22-BASE	1
19	AS568 - 226	1



Shower/Hand Shower Kit:

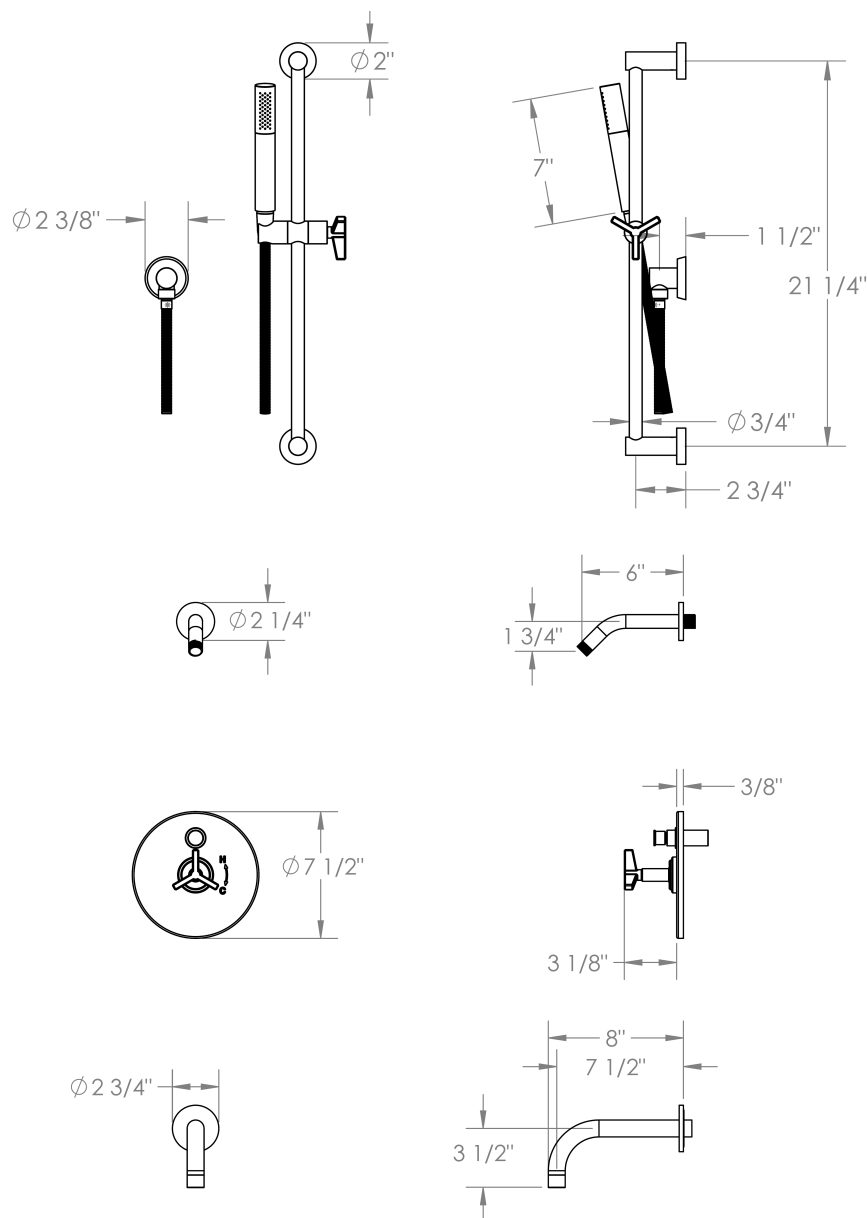
ITEM NO.	PART NUMBER	QTY.
1	24-0.1-ESC	2
2	PB-6524-24-POST	2
3	50-0.1-MNTNG-BASE	2
4	24-0.1-SHFT	2
5	#8- 1.5-IN-DRYWALL-SCRW	4
6	AF6 WALL ANCHOR	4
7	socket set screw cup point_ai	2
8	socket set screw cup point_ai	2
9	PB-4524-BAR	1
10	socket set screw cup point_ai	2
11	pan cross head_ai	1
12	PB-4524.1-SLDR-ASSY	1
13	ELB-BL1-FLNG	1
14	ELB-TIT1-POST	1
15	ELB-TIT1-POST-ADAP	1
16	AS568 - 122	1
17	BL15-CRSS-HNDL	1
18	SH-TIT30-TAIL	1
19	SH-TIT30-HEAD	1
20	Backflow Preventer	1
21	AS568 - 011	1
22	SH-TIT30-TAIL-INSRT	1
23	DS-4079	1
24	DS-4079-HOSE	1
25	HAND SHOWER HOSE	1



Installation Instructions:

- 1. Ensure valve is properly installed according to Installation Sheet provided with valve.**
Note: Specification from finished wall to tip of broached stem is 2 7/8".
- 2. Fit faceplate onto valve.**
Note: for tub/shower valves with diverter, screw diverter knob onto diverter stem.
- 3. Insert handle trim onto stem broach so that escutcheon rests against faceplate and slight clearance is left for handle to rotate freely.**
Note: When fitting handle it may be necessary to shorten broach stem and/or threaded nipple to eliminate gap between handle and escutcheon.
- 4. Install the hand shower assembly (if applicable).** Thread wall elbow onto 1/2" male NPT nipple. Secure mounting kits onto wall. Connect conical shape connection of hose onto hand shower and round connection onto elbow.

Shower & Hand Shower Dimensions:



IMPORTANT INSTALLATION INFORMATION

- USE TEFLON TAPE OR PIPE SEALANT FOR THREADED CONNECTIONS
- DO NOT USE PLUMBER'S PUTTY ON ANY OF THE BRASS COMPONENTS
This will cause the finish to tarnish and void the warranty. A non-corrosive Alkoxy Silicone is recommended.
- DURING SWEATING OF LINES DO NOT OVERHEAT CASTING
Overheating may cause damage to internal mechanism
- COPPER ADAPTORS MAY BE REQUIRED TO COMPLETE YOUR INSTALLATION

For technical support, please call 888-401-1900