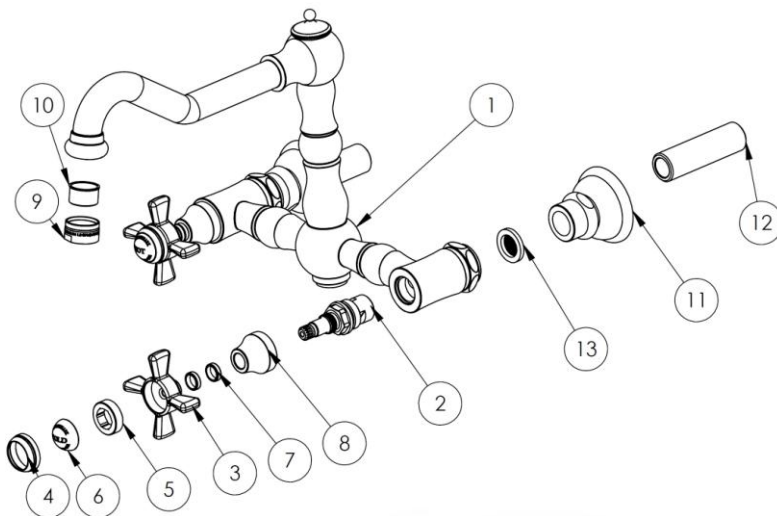
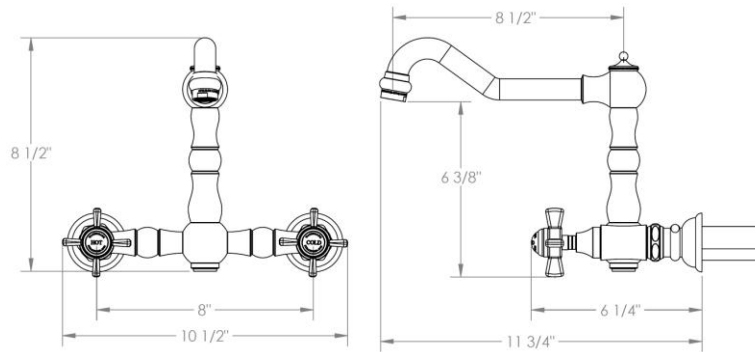


FEATURES

- ¼ turn washerless ceramic disc valve cartridges
- Flow rate 1.5 gpm (5.7 lpm) maximum flow rate
- Solid brass construction
- Warranty:
 - Limited lifetime warranty (residential use)
 - One year (commercial use)
- Shipping weight (lbs.) 10
- Shipping dimensions (in.): 29x12x4



ITEM NO.	PART NUMBER	QTY.
1	206-7.7-SPT-BODY	1
2	SS-502-CARTRIDGE	2
3	S1-CRSS-HNDL	2
4	S1-CAP-RING	2
5	S1-CAP-ADAP	2
6	S1-PRCLN-INSRT-COLD/HOT	1
7	321-5.2-DVRTR-CRT-SPCR	4
8	206-7.6-ESC	2
9	502-AERTR-SHLL	1
10	NEOPERL PCA PL STD	1
11	206-7.7-ESC-BASE	2
12	206-7.7-NPPLE	2
13	206-7.7-GSKT	2

IMPORTANT INSTALLATION INFORMATION

- USE TEFLON TAPE OR PIPE SEALANT FOR THREADED CONNECTIONS
- DO NOT USE PLUMBER'S PUTTY ON ANY OF THE BRASS COMPONENTS
This will cause the finish to tarnish and void the warranty. A non-corrosive Alkoxy Silicone is recommended.
- DURING SWEATING OF LINES DO NOT OVERHEAT CASTING
Overheating may cause damage to internal mechanism
- COPPER ADAPTORS MAY BE REQUIRED TO COMPLETE YOUR INSTALLATION

For technical support, please call 888-401-1900