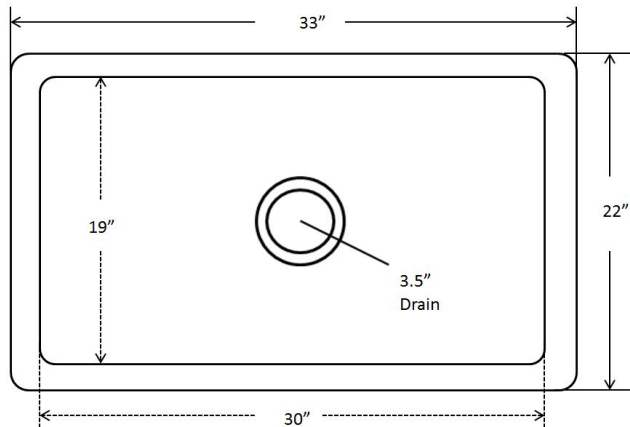


# REJUVENATION

www.rejuvenation.com

## QUIROGA

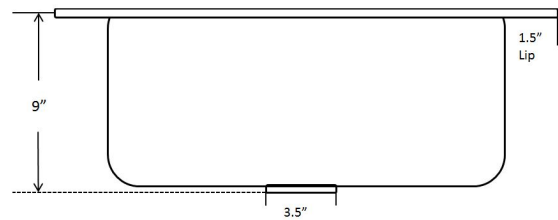
Hammered antique copper kitchen sink



Dimensions:

Outer 33" x 22", 9" depth

Inner 30" x 19", 9" depth



### FEATURES

- Rectangular hand hammered antique copper 14 gauge
- Living finish that will patina over time
- Easy to clean and maintain
- Sound dampening panels and coating to reduce noise
- Rigorously tested to ensure no puddling or leaking
- Coordinating drain available
- Limited Lifetime Warranty