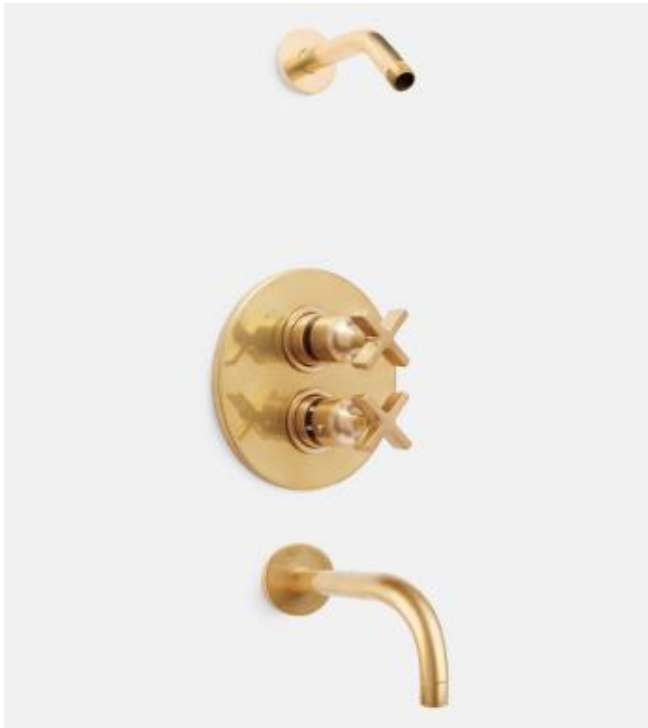


2019.02.05

www.rejuvenation.com



PRODUCT SPECIFICATIONS

- Solid brass
- Set includes 1/2" threaded shower arm with back plate
- Optional shower head flow rate: 1.75 GPM
- Includes rough-in valve
- Ships directly from vendor
- Made exclusively for Rejuvenation in Brooklyn, New York
- Meets the applicable requirements of ASME A112.18.1-2005/CSA B125.1-05, entitled "Plumbing Supply Fittings"

