

# C4266 Plain Ring Door Knocker

## Mounting Instructions

***Please read before using your*** Plain Ring Door Knocker

- **Note:** This Plain Ring Door Knocker is made from forged Brass and includes 4 bolts and 2 washers for assembly. The attached bolts can be assembled on both 1-3/4" and 2-1/4" thick doors.
- **For best results, professional installation is recommended.**

### Hardware Included:

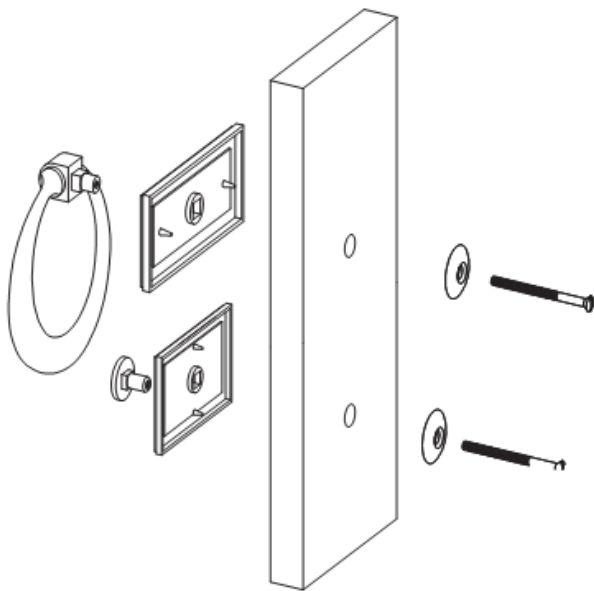
Rectangular back plate	1 pc	mallet	1 pc	washer	2 pcs
Square back plate	1 pc	bolt (short)	2 pcs	for 1-3/4" thick doors	
Door knocker ring	1 pc	bolt (long)	2 pcs	for 2-1/4" thick doors	

### Mounting Instructions:

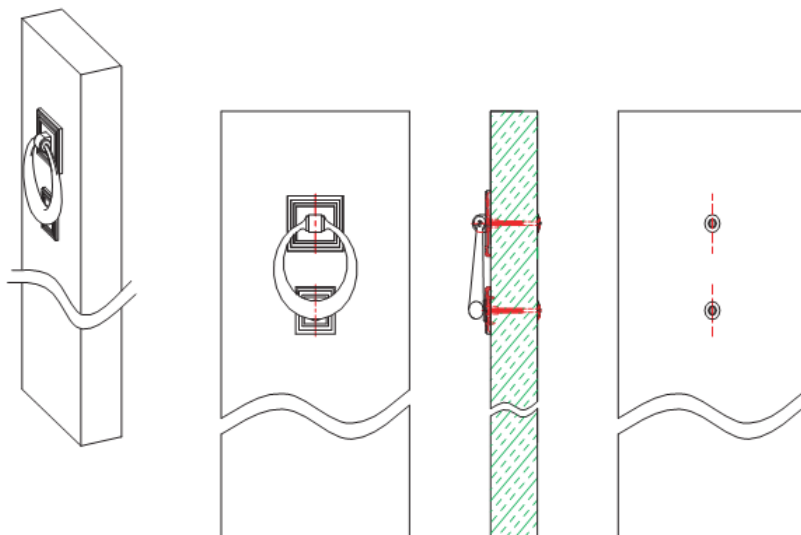
- 1) Please follow below steps for rectangular back plate mounting: (A) hold the rectangular back plate tight and vertically straight on the door at the desired mounting location, then use a pencil to mark the support surface through the hole. Set the back plate aside. (B) Drill straight through the door with a 1/4 inch diameter drill bit and enlarge the outside of the hole to be 3/8 inch diameter and about 3/8 inch deep. (C) Please note there are two spikes on the right and left of the hole. Use a 1/16 inch diameter drill bit to make "pilot" holes on the front of the door for the two spikes. Pilot holes should be no more than 3/16 inch deep. (D) Mount the rectangular back plate against the holes on the door again. Put the door knocker ring into the hole of the rectangular back plate. Use a flathead screwdriver to insert the bolt with washer through the door from inside. Slowly turn the bolt clockwise until tight with the door knocker ring.
- 2) Please follow below steps for square back plate mounting (A) hold the square back plate tight and vertically straight on the door at the desired position, then use a pencil to mark the support surface through the hole. Please make sure the door knocker ring can be knocked on the center of the square back plate. Then set the back plate aside. (B) Drill straight through the door with a 1/4 inch diameter drill bit –enlarge the outside of the hole to be 3/8 inch diameter and about 3/8 inch deep. (C) Mount the square back plate against the holes on the door again. Put the mallet into the hole of the square back plate. Use a Phillips screwdriver to insert the bolt with washer through the door from inside. Slowly turn the bolt clockwise until tight with the mallet.

### Care Instructions:

Wipe with a soft, dry cloth. To protect the finish, do not use household cleaners or abrasives.



### Assembly Diagram



### Final Mounting Result

Thank you for your purchase!

2550 N.W. Nicolai Street, Portland Oregon 97210 Customer Service: 888 401-1900 [rejuvenation.com](http://rejuvenation.com)

**REJUVENATION®**