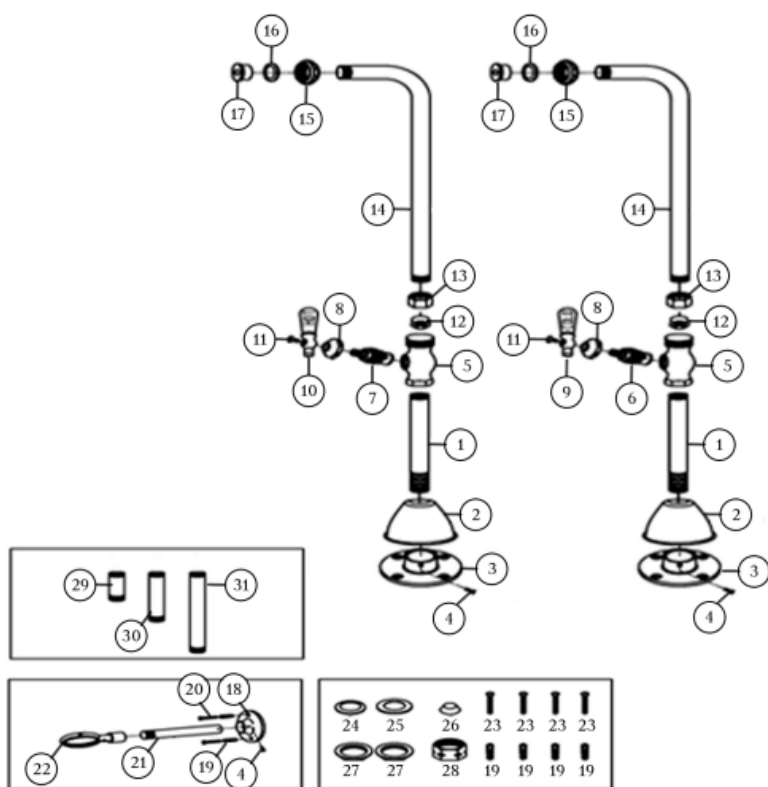


This bathroom fixture has been carefully engineered to provide a long, trouble-free service life under normal usage. It has been factory-tested and is ready for installation. We suggest this fixture be installed by a qualified licensed plumber. We also strongly recommend tub & hardware be on site prior to rough in.

1. Shut off the water supply before installation.
2. The connection to the floor is 1/2" IPS female.
3. Tighten 1/2" x 7-1/2" nipple to the floor using Teflon tape and place the floor flange over the nipple and screw to floor with supplied screws.
4. Set screw floor flange in place to nipple.
5. Place covering flange supplied over the flange in the floor.
6. Screw valve onto the top side of the nipple using Teflon tape. If using wall supports, slide 13/16" loops over the freestanding tubes and thread tubes into the top side of the valve using Teflon tape.
7. Place wall support tubes in place (5/8" x 12") and cut to fit your application on the non-threaded end and set screw flange and screw to wall.
8. Thread the union couplings to the end of the bent risers using Teflon tape where it applies to seal. Place rubber washer in the end of the union and connect your faucet to the freestanding supply tubes.





ITEM	PART NO.	DESCRIPTION	QTY	NOTES
01	398V-01	NIPPLE	2	
02	398V-02	ESCUTCHEON	2	
03	398V-03	FLANGE	2	
04	398V-04	SCREW	4	
05	398V-05	VALVE	2	
06	398V-06	COLD STEM	1	
07	398V-07	HOT STEM	1	
08	398V-08	BELL NUT	2	
09	398V-09	COLD HANDLE	1	
10	398V-10	HOT HANDLE	1	
11	398V-11	SCREW	2	
12	398V-12	RUBBER	2	
13	398V-13	NUT	2	
14	398V-14	TUBE	2	
15	398V-15	NUT	2	
16	398V-16	RUBBER WASHER	2	
17	398V-17	RUBBER	2	
18	398V-18	FLANGE	2	
19	398V-19	GENERAL FITTINGS	10	
20	398V-20	SCREW	10	
21	398V-21	TUBE	2	
22	398V-22	LOOP	2	
23	398V-23	SCREW	4	
24	398V-24	RUBBER WASHER	2	
25	398V-25	RUBBER WASHER	2	
26	398V-26	CONE WASHER	2	
27	398V-27	LOCK NUT	4	
28	398V-28	NUT	2	
29	398V-29	3" NIPPLE	2	
30	398V-30	6" NIPPLE	2	
31	398V-31	9" NIPPLE	2	