

# REJUVENATION

## CULINARY PULL DOWN KITCHEN FAUCET

### Features

- All brass construction
- 360° rotating arm with magnetic docking to secure sprayhead
- Flexible closed coil stainless steel spring
- One button operation brass sprayhead has dual function aerated or spray mode
- Spray jets have easy-to-clean surface that withstands mineral build-up
- Ceramic disc cartridge
- 1.8 gpm (6.8 L/min) max flow rate
- Over 30 finishes including 15 PVD finishes

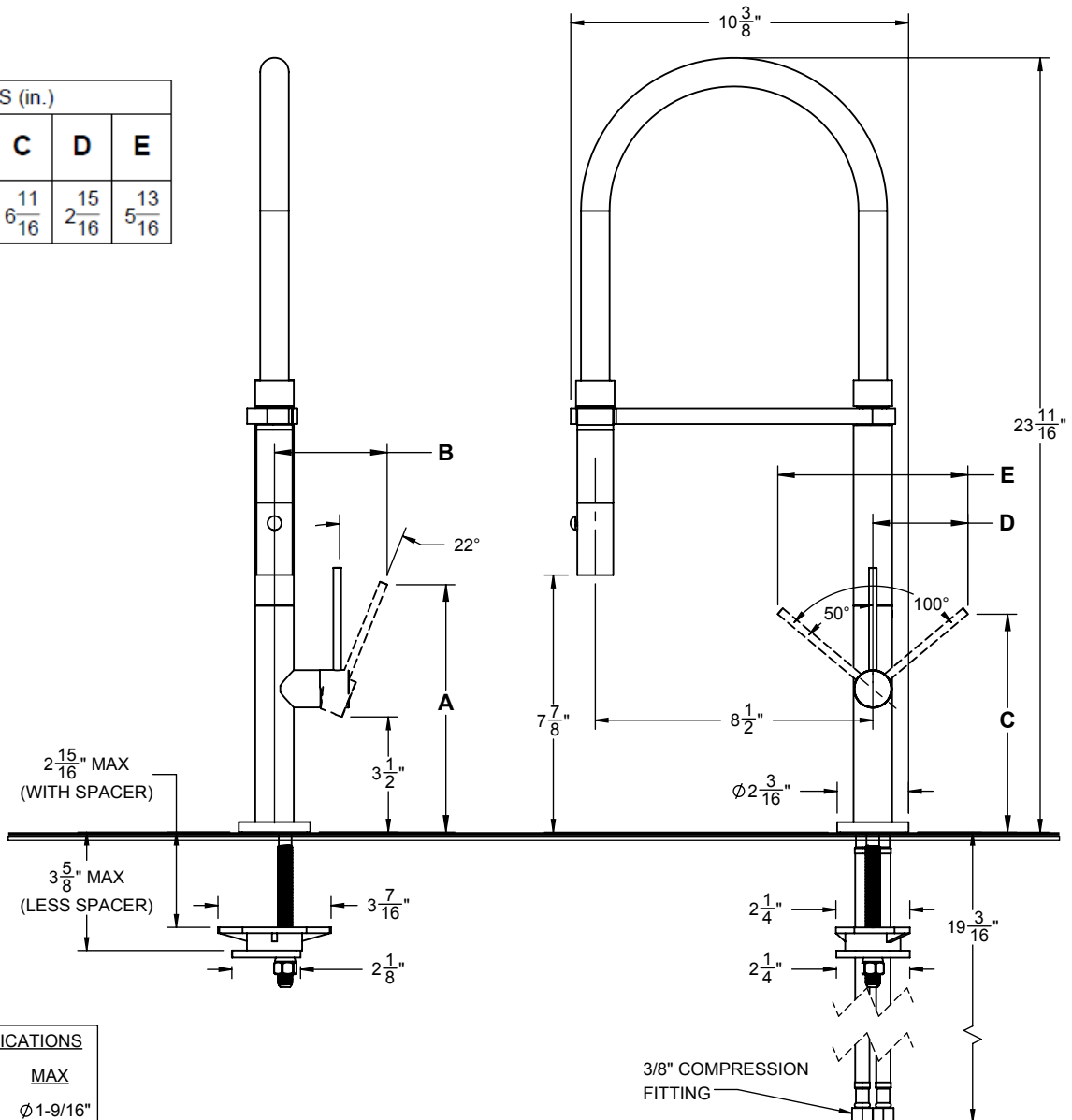


### Codes/Standards Applicable

Meets or exceeds the following at date of manufacture:

- ASME A112.18.1/CSA B125.1
- NSF 61 and NSF 372
- CEC / DOE
- Commonwealth of MA
- ADA Compliant

| DIMENSIONS (in.) |                 |                 |                  |                  |                   |
|------------------|-----------------|-----------------|------------------|------------------|-------------------|
| HANDLE           | A               | B               | C                | D                | E                 |
| ST               | $7\frac{9}{16}$ | $3\frac{7}{16}$ | $6\frac{11}{16}$ | $2\frac{15}{16}$ | $13\frac{13}{16}$ |



| THROUGH-HOLE SPECIFICATIONS |            |           |
|-----------------------------|------------|-----------|
| MIN                         | RECOMENDED | MAX       |
| Ø 1-1/4"                    | Ø 1-3/8"   | Ø 1-9/16" |

SPECIFICATIONS SUBJECT TO CHANGE WITHOUT NOTICE

ALL DIMENSIONS SHOWN TO NEAREST 1/16"