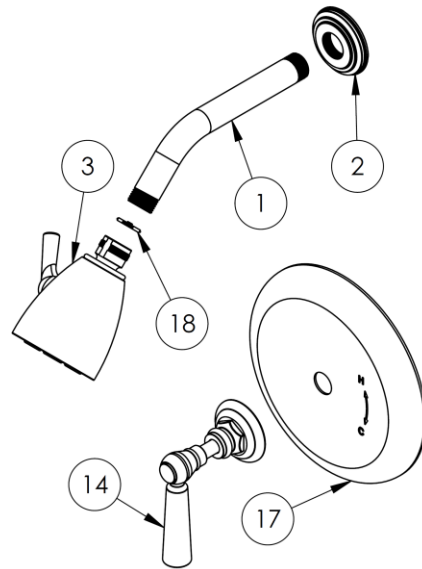


FEATURES

- Diaphragm cartridge maintains water temperature within $\pm 2^\circ$
- Compensates for water pressure fluctuations preventing scalding
- Flow rate: 5-7 gpm at 80 psi
- Solid brass construction
- Warranty:
 - Limited lifetime warranty (residential use)
 - One year (commercial use)
- Standard finishes:
 - polished chrome
 - satin nickel
 - polished nickel
 - rustic brass
- Listed by IAPMO, CSA, NSF, & other municipalities
- Shipping weight (lbs.): 15.7
- Shipping dimensions(in.): 12 x 22.5 x13

Shower Kit:

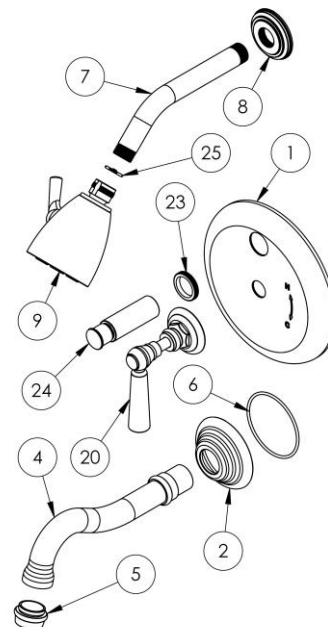
ITEM NO.	PART NUMBER	QTY.
1	SS-403TRAF-ARM SHOWER ARM	1
2	SS-403TRAF-FLNG	1
3	SH-503 SHOWER HEAD	1
14	WTR-S1A or WTR-S3	1
17	FACEPLATE	1
18	NEOPERL FLOW REGULATOR	1



NOTE: Optional components may be shown.

Shower/Tub Kit:

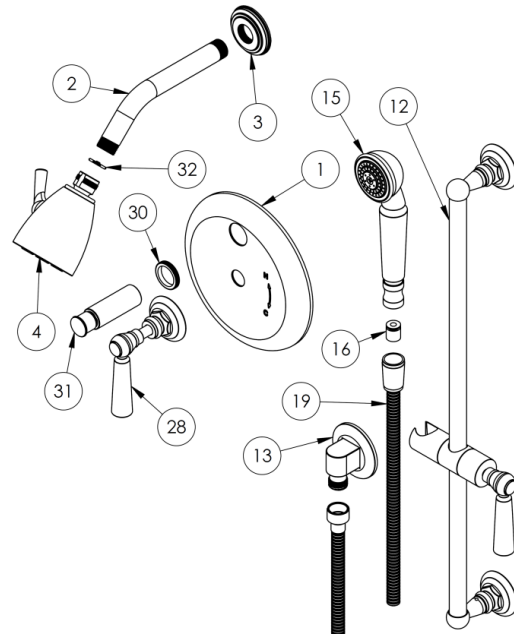
ITEM NO.	PART NUMBER	QTY.
1	FACEPLATE	1
2	TBSPT-206-BASE-RING	1
4	TBSPT-206-SPT	1
5	206-8-NOSE-RING	1
6	AS568 - 147	1
7	SS-403TRAF-ARM SHOWER ARM	1
8	SS-403TRAF-FLNG	1
9	SH-503 SHOWER HEAD	1
20	WTR-S1A or WTR-S3	1
23	DIVERTER GROMMET	1
24	DIVERTER KNOB	1
25	NEOPERL FLOW REGULATOR	1



NOTE: Optional components may be shown.

Shower/Hand Shower Kit:

ITEM NO.	PART NUMBER	QTY.
1	FACEPLATE	1
2	SS-403TRAF-ARM SHOWER ARM	1
3	SS-403TRAF-FLNG	1
4	SH-503 SHOWER HEAD	1
12	POSITIONING BAR	1
13	ELB-6001	1
15	SH-S525-A HAND SHOWER	1
16	NEOPERL FLOW REGULATOR	1
19	DS-4079 HAND SHOWER HOSE	1
28	WTR-S1A or WTR-S3	2
30	DIVERTER GROMMET	1
31	DIVERTER KNOB	1
32	NEOPERL FLOW REGULATOR	2



NOTE: Optional components may be shown.

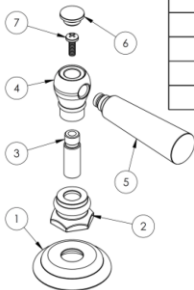
Installation Instructions:

- 1. Ensure valve is properly installed according to Installation Sheet provided with valve.**
Note: Specification from finished wall to tip of broached stem is 3 1/4".
- 2. Fit faceplate onto valve.**
Note: for tub/shower valves with diverter, screw diverter knob onto diverter stem.
- 3. Insert handle trim onto stem broach so that escutcheon rests against faceplate and slight clearance is left for handle to rotate freely.**
Note: When fitting handle it may be necessary to shorten broach stem and/or threaded nipple to eliminate gap between handle and escutcheon.
- 4. Install the hand shower assembly (if applicable).** Thread wall elbow onto 1/2" male NPT nipple. Secure mounting kits onto wall. Connect conical shape connection of hose onto hand shower and round connection onto elbow.

Handle Trims:

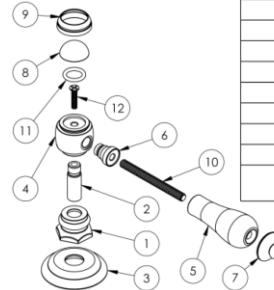
Code: WTR-S1A

ITEM NO.	PART NUMBER	QTY.
1	S1-ESC	1
2	S1-ESC-NUT	1
3	S1-STEM	1
4	A-POST	1
5	S1A-LVR	1
6	A-POST-CAP	1
7	CR-PHMS 0.164-32x0.5x0.5-S	1

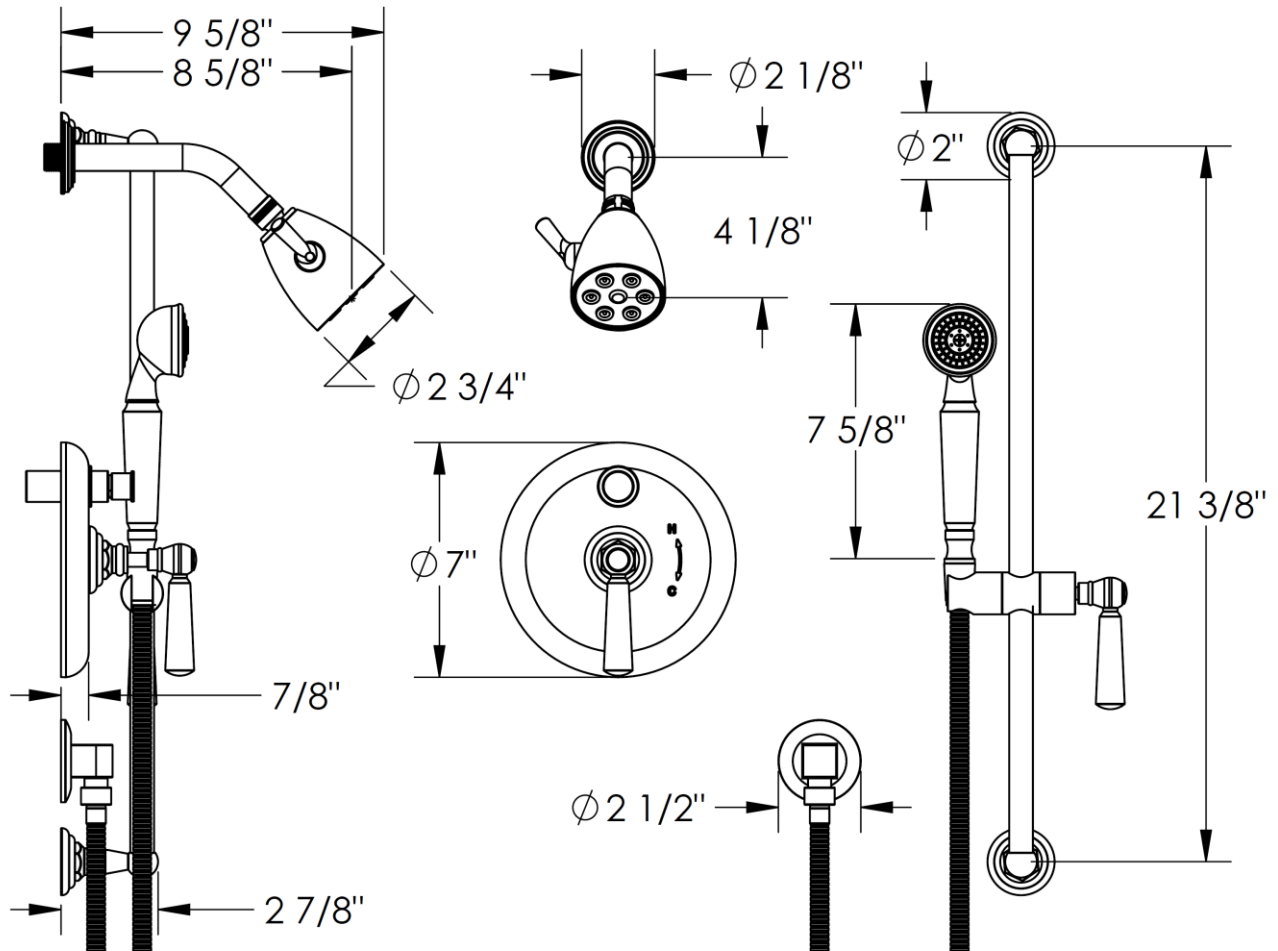


Code: WTR-S3

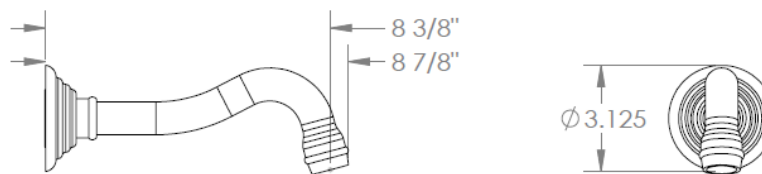
ITEM NO.	PART NUMBER	QTY.
1	S1-ESC-NUT	1
2	S1-STEM	1
3	S1-ESC	1
4	S3-POST	1
5	S3-PRCLN-LVR-INSRT	1
6	S3-POST-INSRT	1
7	D-LVR-END	1
8	S1-PRCLN-INSRT	1
9	S1-CAP-RING	1
10	.25-20x2.625-THRD-ROD	1
11	AS568 - 112	1
12	CR-FHMS 0.164-32x0.75x0.75-S	1



Shower & Hand Shower Dimensions:



Tub Spout Dimensions:



IMPORTANT INSTALLATION INFORMATION

- USE TEFLON TAPE OR PIPE SEALANT FOR THREADED CONNECTIONS
- DO NOT USE PLUMBER'S PUTTY ON ANY OF THE BRASS COMPONENTS
This will cause the finish to tarnish and void the warranty. A non-corrosive Alkoxy Silicone is recommended.
- DURING SWEATING OF LINES DO NOT OVERHEAT CASTING
Overheating may cause damage to internal mechanism
- COPPER ADAPTORS MAY BE REQUIRED TO COMPLETE YOUR INSTALLATION

For technical support, please call 888-401-1900