

GENEVA 36in Vanity

BEFORE YOU BEGIN

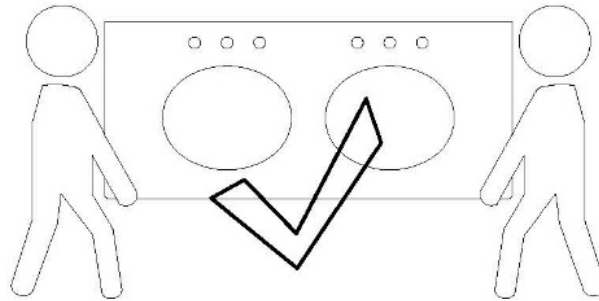
- Marble top is both heavy, and until installed, fragile. Please have a helper and use caution when moving marble top.

Important Safety Instructions:

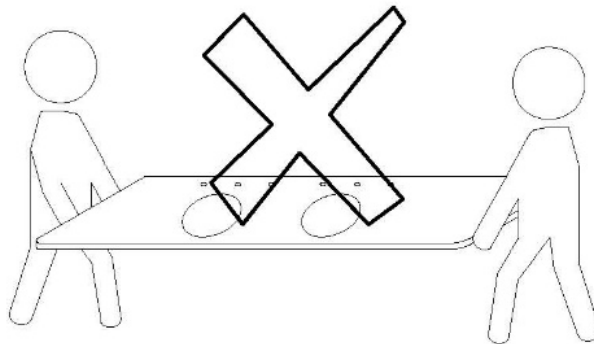
Keep natural stone materials in its packaging until installation and store on its edge.

CAUTION: When removing natural stone product from its package, always ensure it is removed vertically on its long edge.

- Always carry natural stone product vertically on its long edge.



- Carrying natural stone flat WILL cause them to crack or break.



BEFORE YOU BEGIN (cont'd)

- Make sure to observe all local plumbing codes.
- Prior to installation, unpack and inspect both the console and marble top and porcelain lavatory for damage. Locate the installation parts package and put in a safe place—you will need this for installation.
- *Do not dispose of any packaging or contents of the shipping carton until assembly is completed to avoid accidentally discarding small parts or hardware.*
- Installation assumes that walls and floor are plumb and level. Please make appropriate adjustments for other conditions.
- Remove any molding that may prevent the console from being set flush to the finished wall.

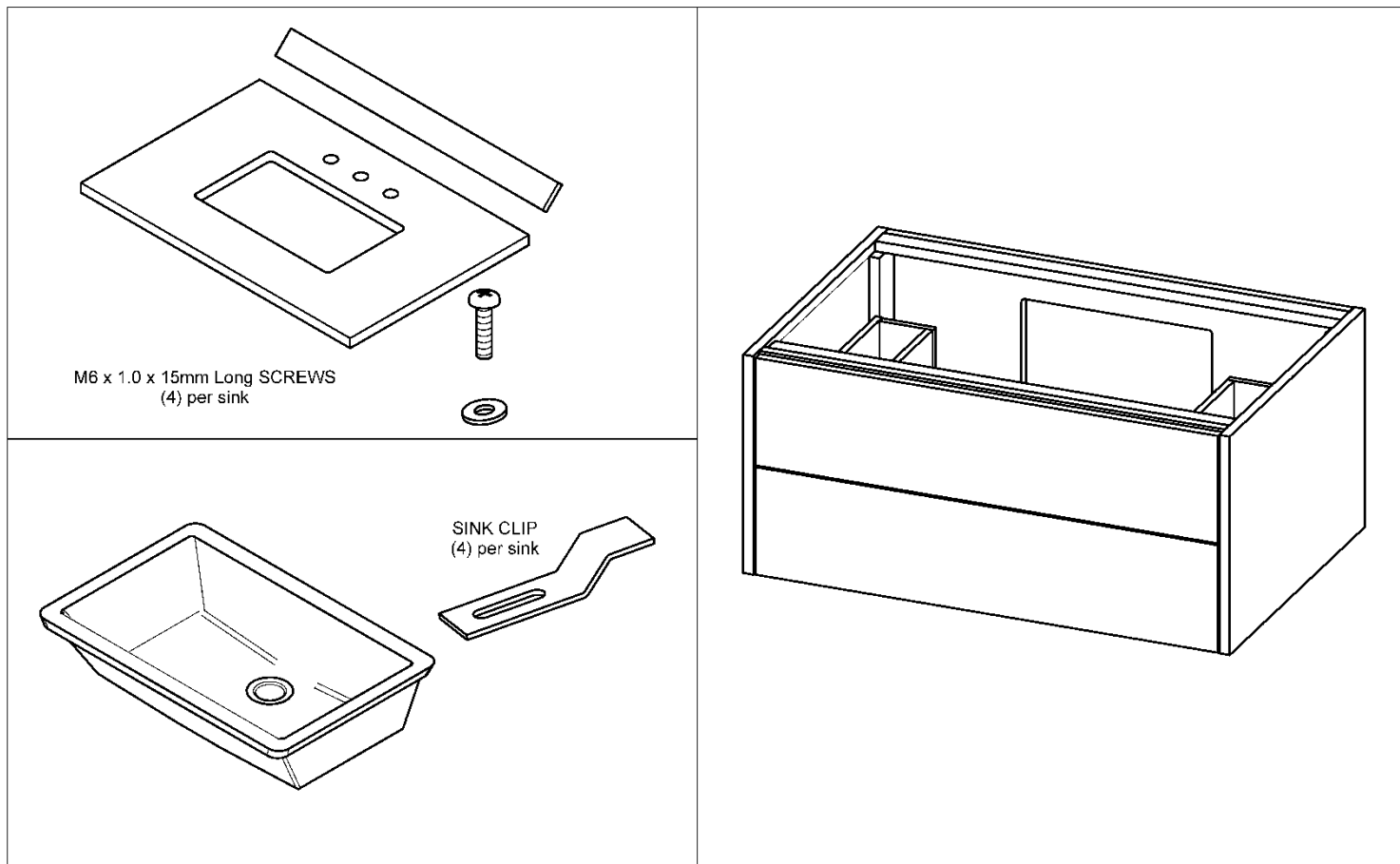
TOOLS AND MATERIALS

- Tape measure
- Pencil
- Level
- Drill with appropriate drill and driver bits
- Eye protection
- Clear 100% silicone adhesive caulk
- Screws for securing vanity to building framing DO NOT USE WALL ANCHORS
- Wood blocking - if building has steel wall studs or wall studs are not in appropriate locations

CARE INSTRUCTIONS

- Dust often using a clean, soft, dry and lint-free cloth.
- Immediately blot up spills, then wipe with a clean, damp cloth.
- We do not recommend the use of chemical cleansers, abrasives or furniture polish on our finishes.
- Hardware may loosen over time. Periodically check to make sure all connections are tight. Re-tighten if necessary.

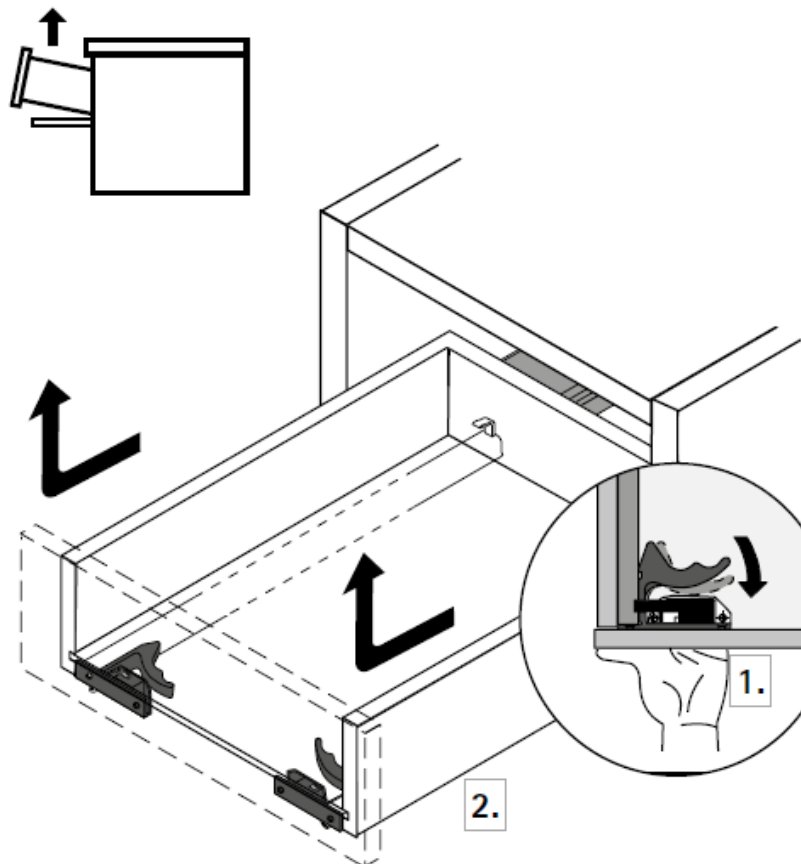
PACKED IN 3 BOXES AS SHOWN



ATTACH THE VANITY BASE TO THE WALL

DO NOT INSTALL WITH SHEETROCK ANCHORS

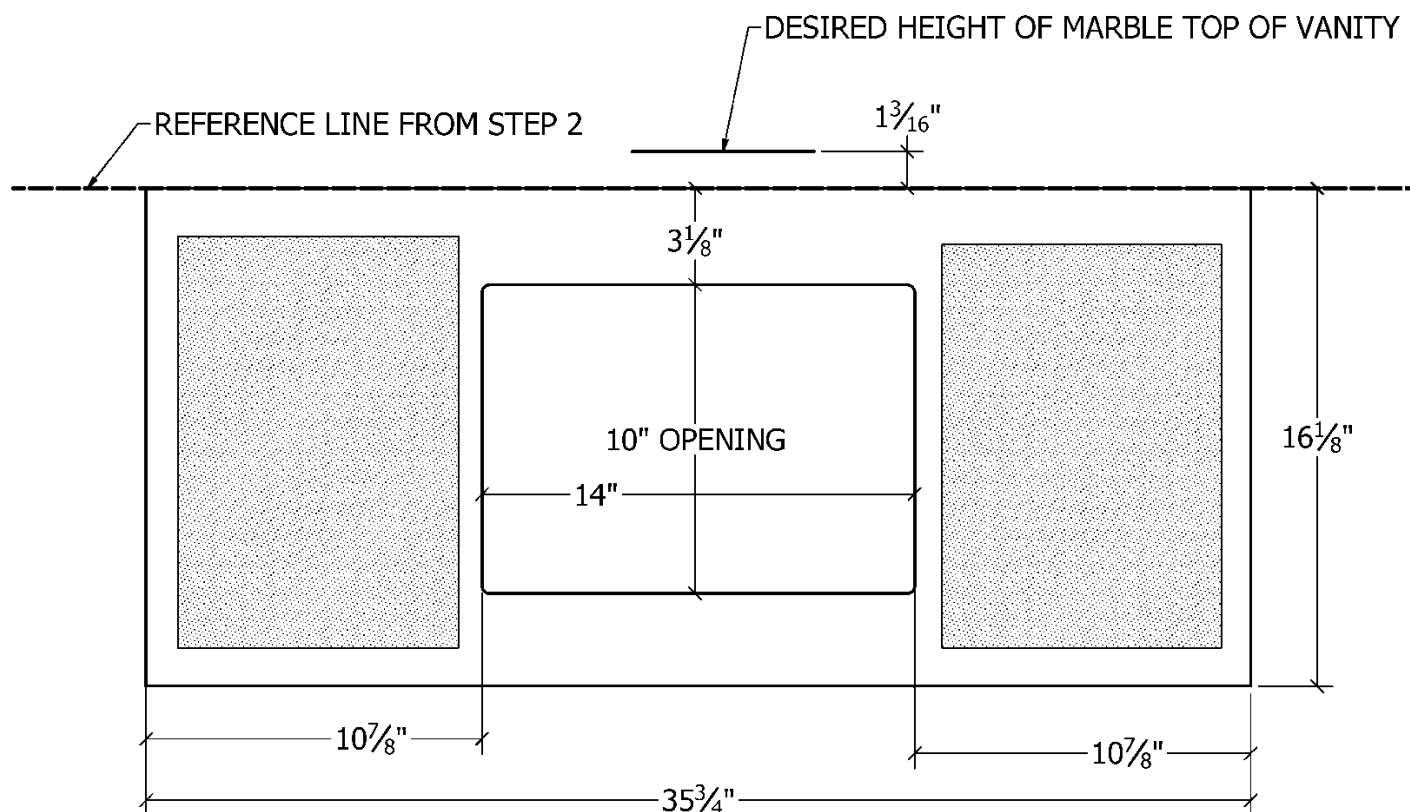
1. Remove drawers and set aside in a safe place. No tools are needed. Make a note of their original location.



2. Mark the desired height of the marble top. (34" and 36" are averages), draw a horizontal reference line 1-3/16" below that mark to represent the top of the vanity base without the marble top.

ATTACH THE VANITY BASE TO THE WALL (CONT'D)

- Use the drawing below to mark out the location of the vanity base and opening on your wall.



- In each of the shaded areas, mark 2 fastener locations that align with studs and avoid plumbing pipes. If you can't locate studs at the fastener locations **or you have steel studs**, remove drywall, add 2 x 6 blocking to create fastener locations and reinstall drywall.
- Drill (4) appropriately sized pilot holes into the studs or blocking to avoid splitting. For the fasteners supplied with the vanity, use a 1/4" diameter drill bit.

ATTACH THE VANITY BASE TO THE WALL (CONT'D)

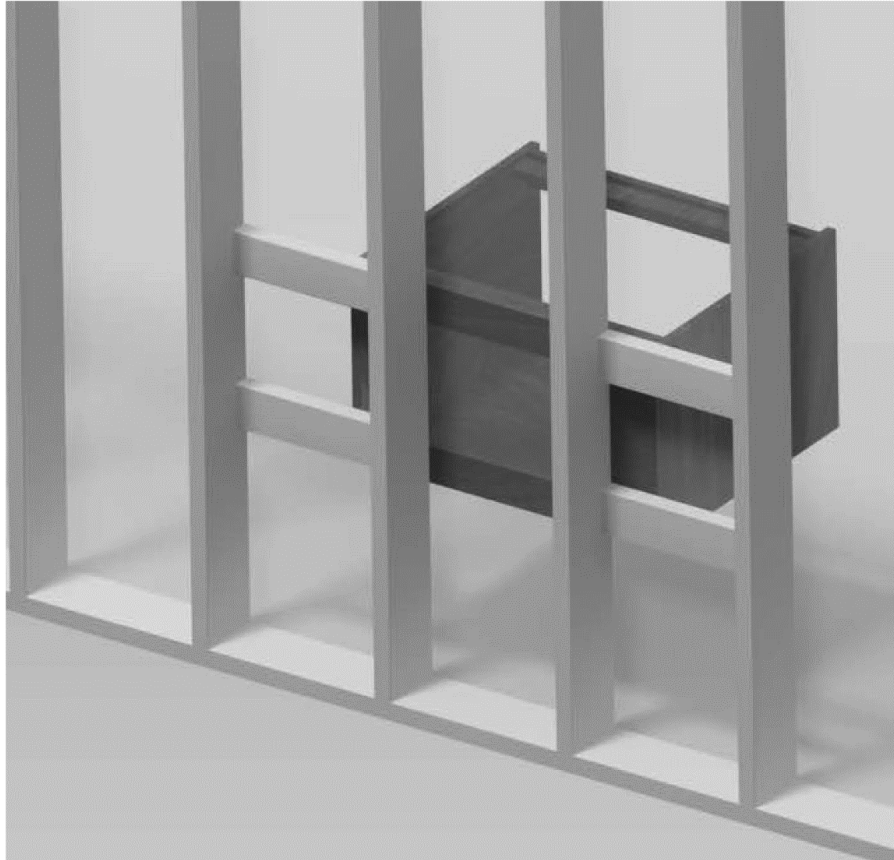
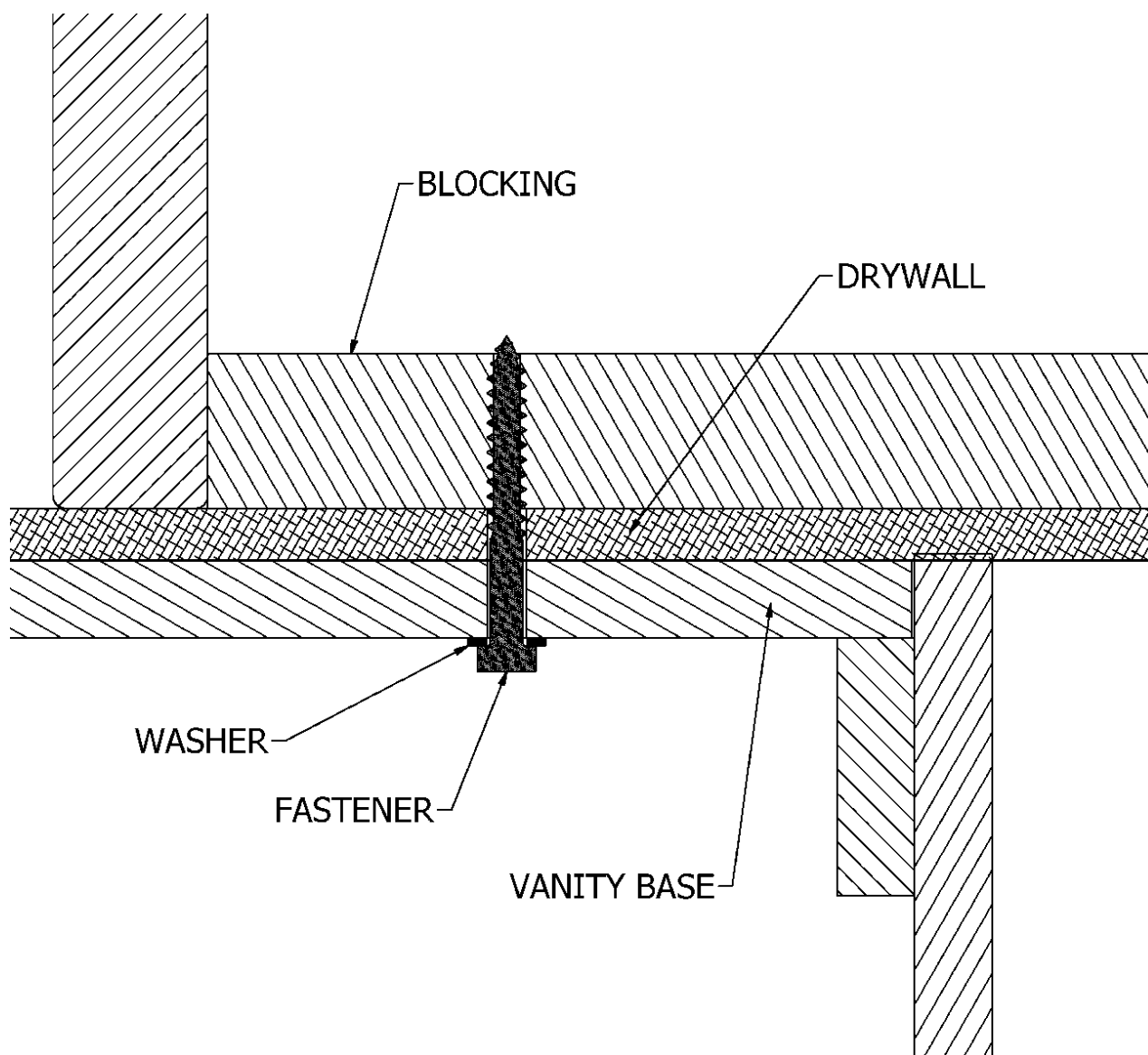


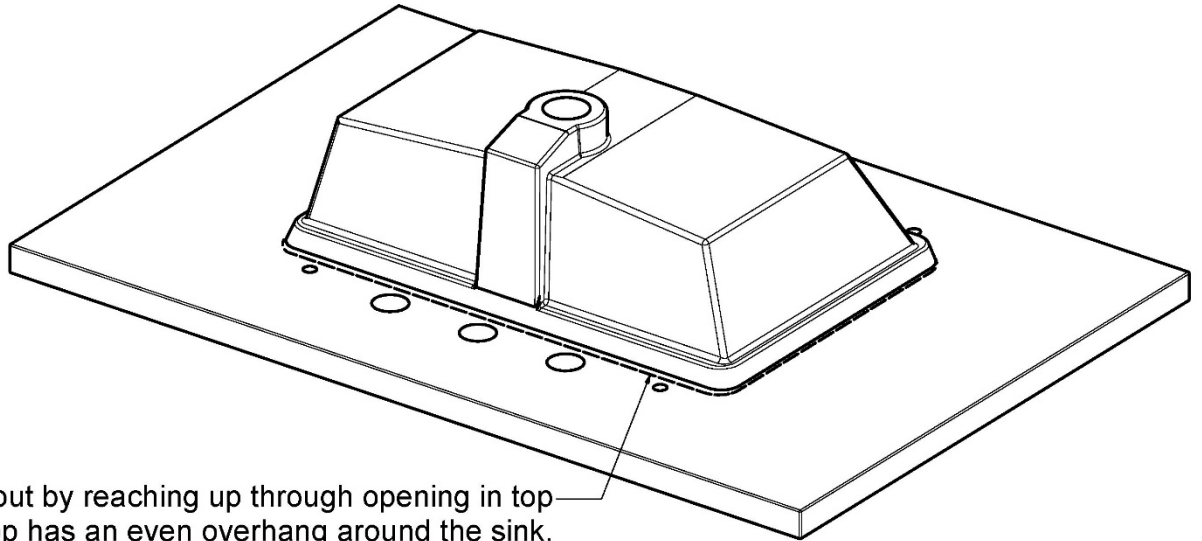
ILLUSTRATION SHOWING POSSIBLE BLOCKING ORIENTATION
Plumbing and drywall not shown for clarity

6. Transfer the pilot hole locations to the back of the vanity base and drill 3/8" diameter fastener clearance holes.
7. With a helper, secure the vanity base to the studs or blocking using the fasteners and washers supplied (see page 8 for cross-section view).
8. If necessary, place shims between the vanity and wall so the vanity base is not distorted and stays level in all directions.
9. Push down on the vanity to check all 4 fasteners are holding properly.

ATTACH THE VANITY BASE TO THE WALL (CONT'D)

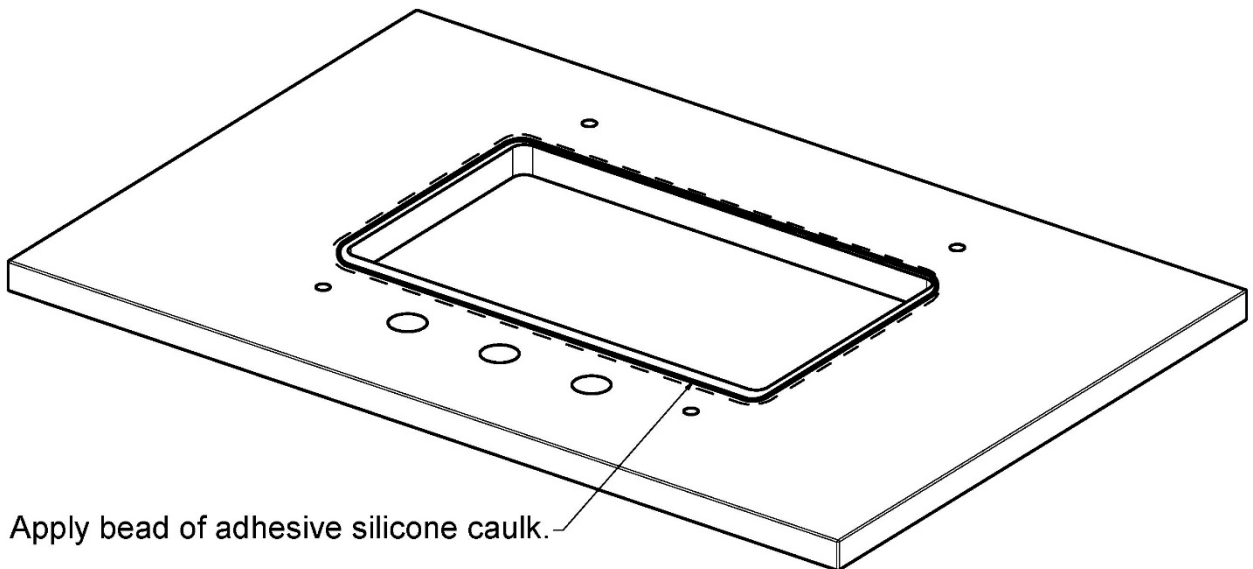


ATTACH THE UNDERMOUNT SINK TO THE TOP



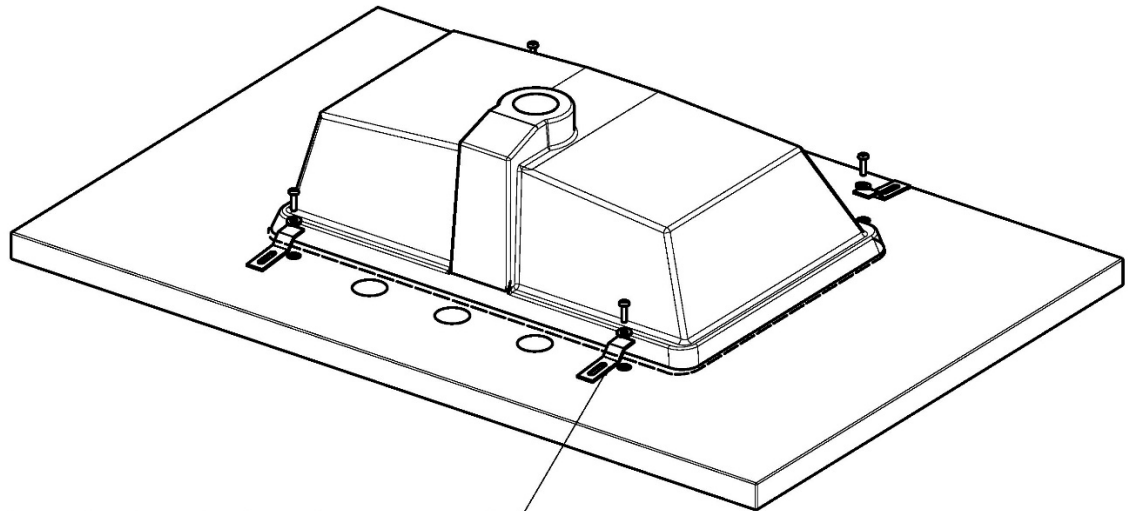
Center sink on cutout by reaching up through opening in top and verifying top has an even overhang around the sink. Once centered, mark location.

Note orientation of sink.
Drain is towards side with faucet holes.



Apply bead of adhesive silicone caulk.

ATTACH THE UNDERMOUNT SINK TO THE TOP (CONT'D)



Realign sink and install 4 clips with screws per sink.

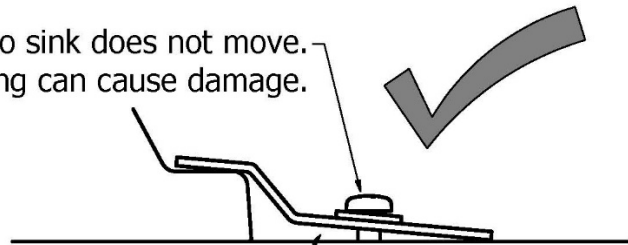
!! Use hand screwdriver only !!

Screws only need to be snug enough that sink does not move.

The clips do not have to be flat against the stone top.

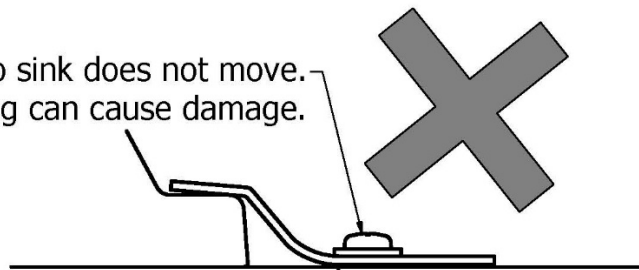
Let caulk cure per manufacturer's directions.

Hand tighten screw snugly enough so sink does not move.
Over torquing can cause damage.



GAP between CLIP and TOP is OK

Hand tighten screw snugly so sink does not move.
Over torquing can cause damage.



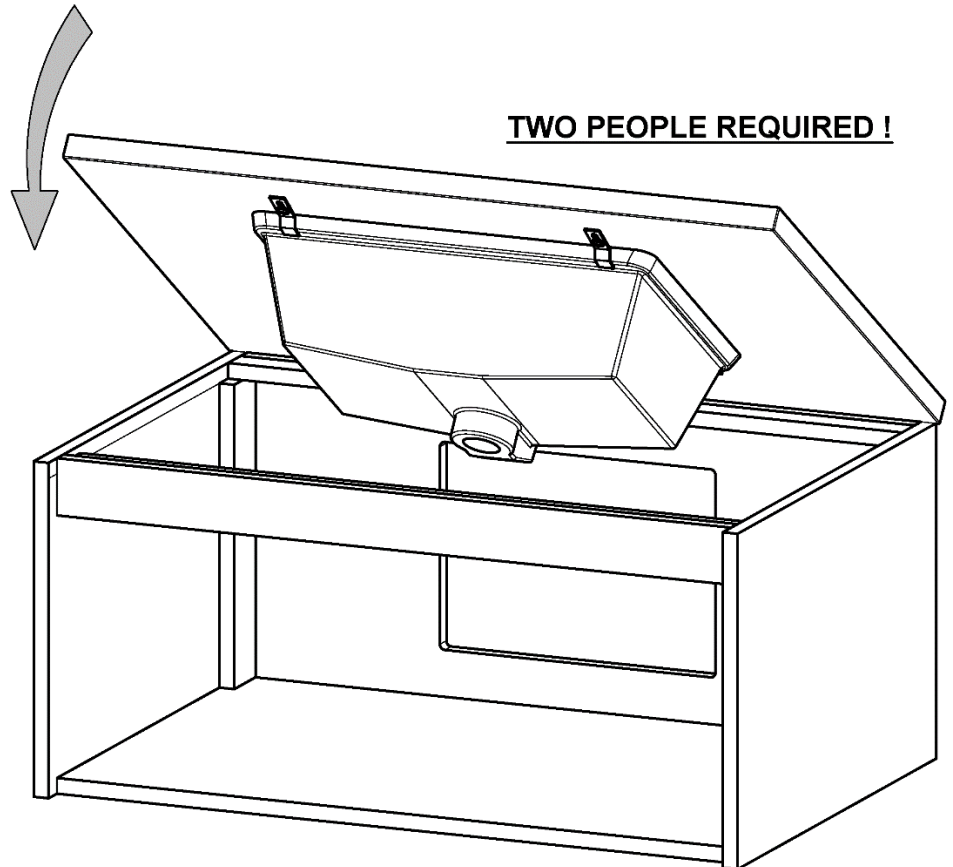
Do NOT try to screw clip tight against stone top.

ATTACH TOP TO VANITY BASE

Place bead of caulk along top edge of vanity base.

Lower down slowly while back edge of top rests on back of vanity.

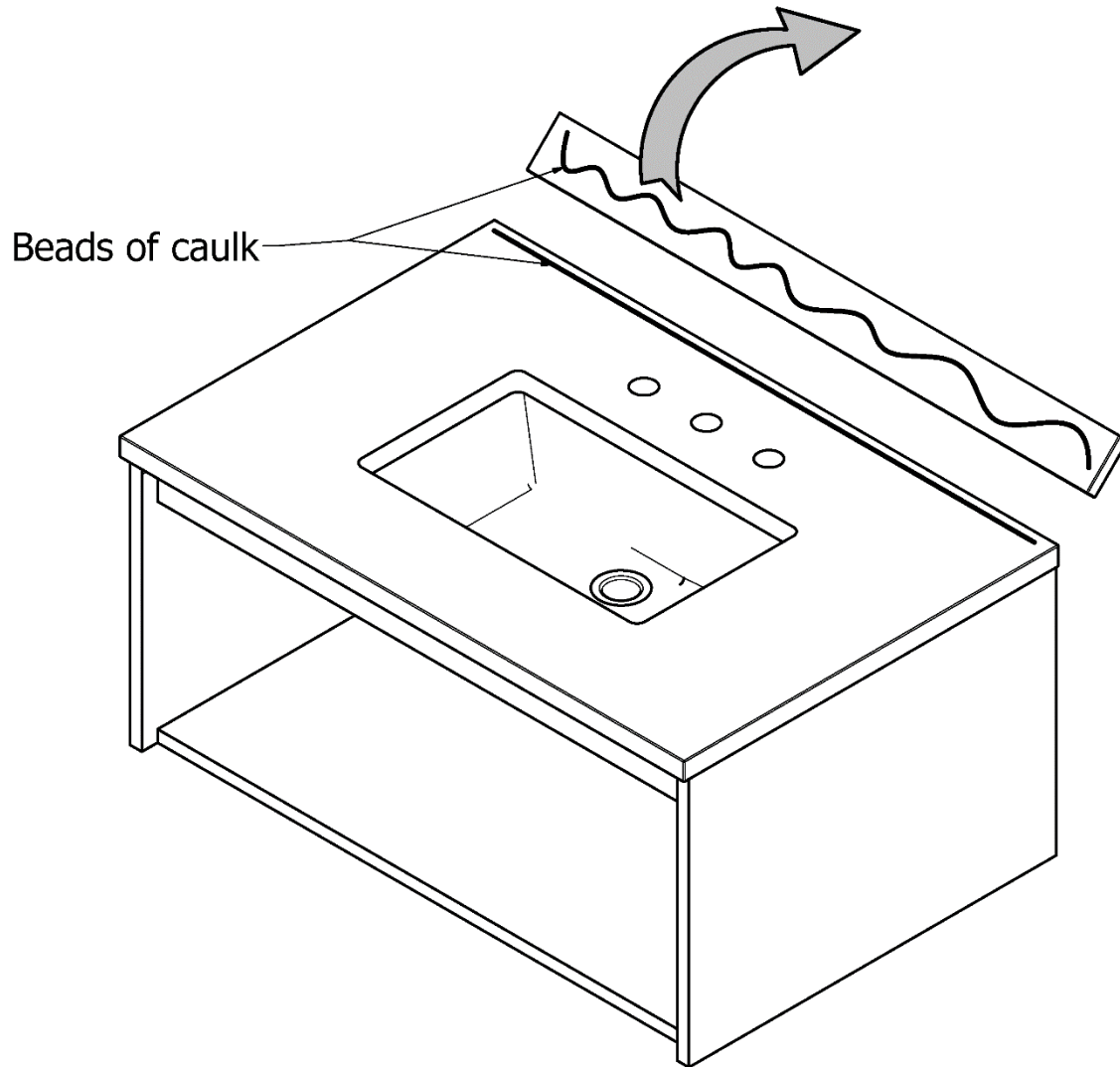
Push back against wall and align overhang side to side.



TWO PEOPLE REQUIRED !

INSTALL BACKSPLASH

- Apply a bead of caulk at the back edge of the top and the BACK of the backsplash.
- Press against wall and align evenly side to side.
- Hold in place with blue painter's tape until caulk cures

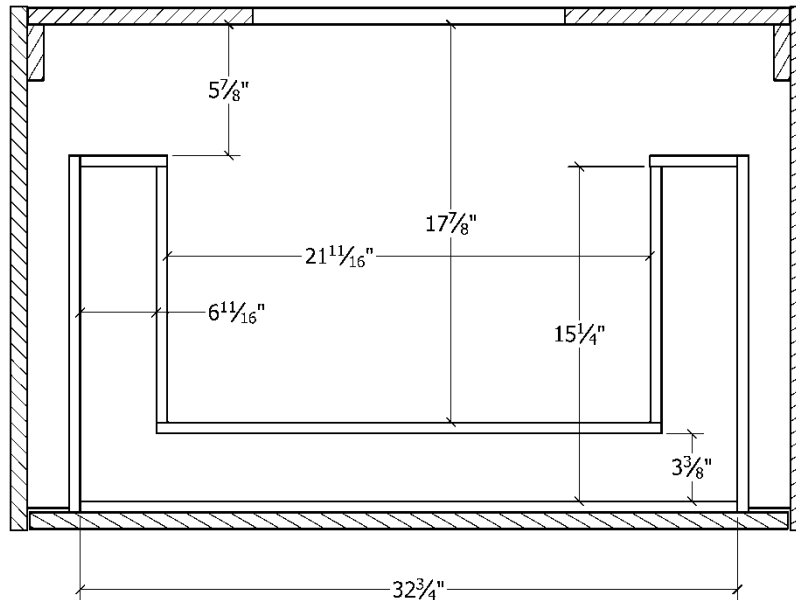


CONNECT FAUCETS AND PLUMBING

Keep these clearances in mind when routing plumbing

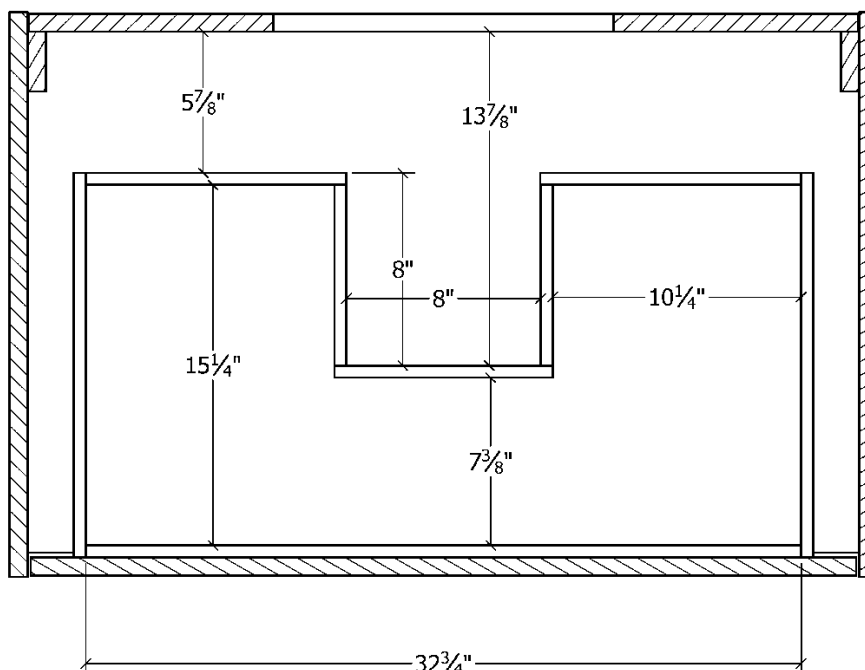
SECTION VIEW LOOKING DOWN

Showing UPPER Drawer Dimensions

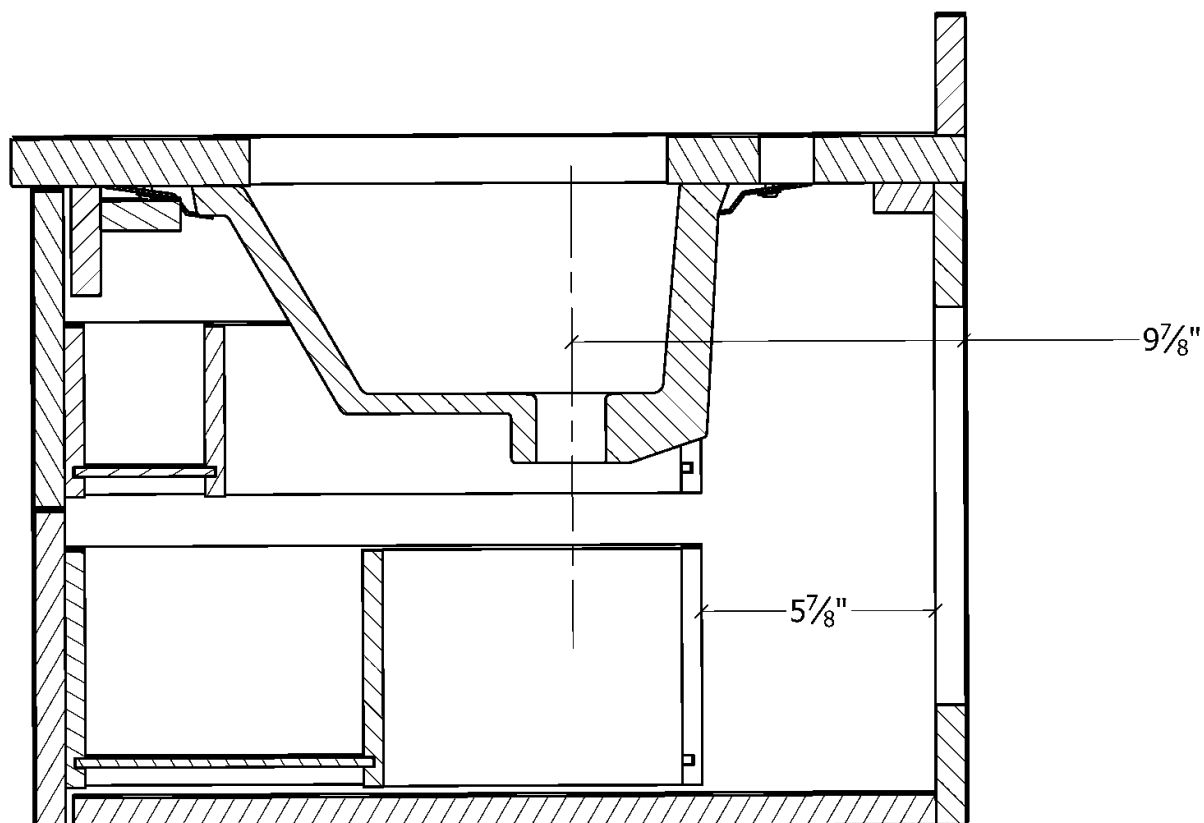


SECTION VIEW LOOKING DOWN

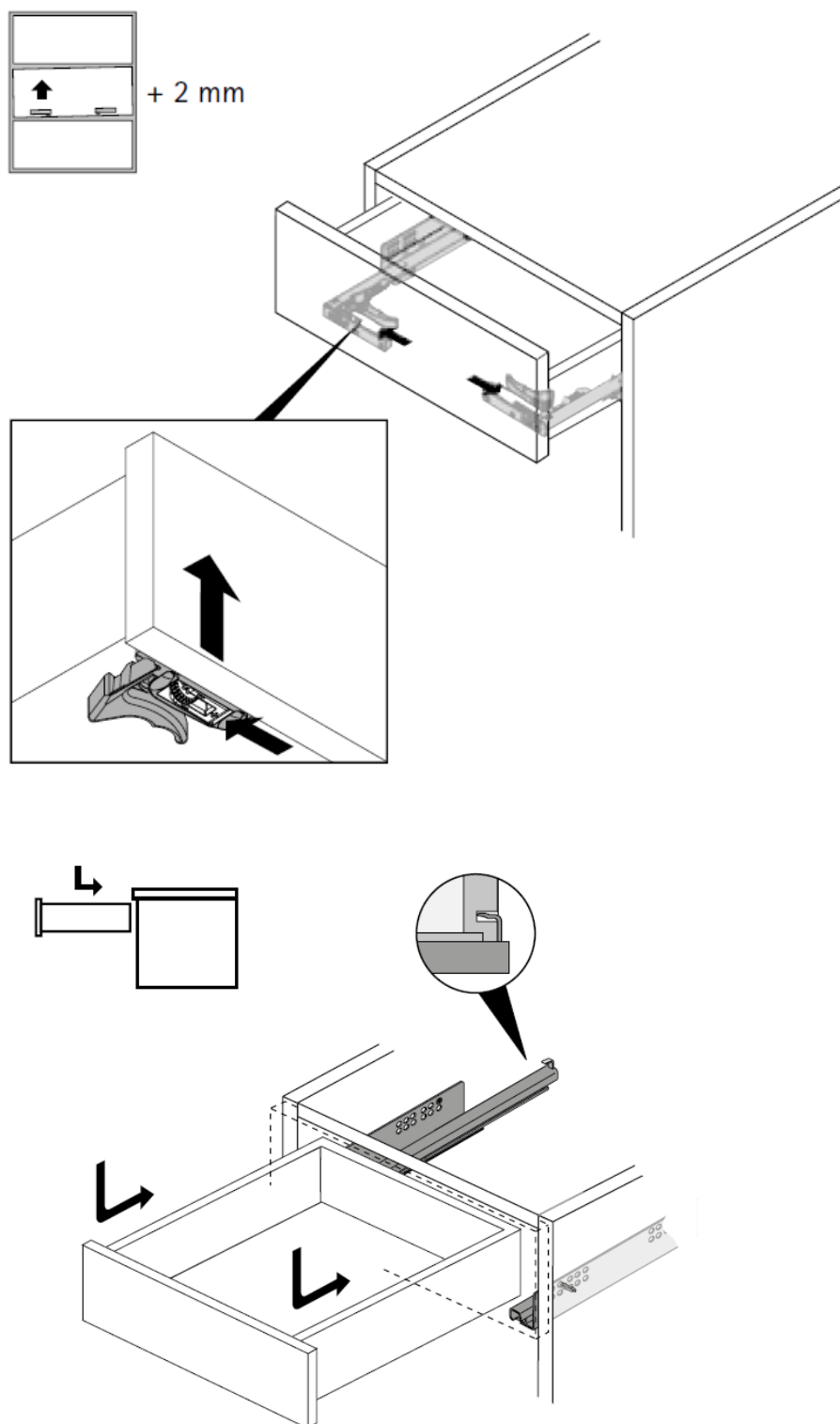
Showing LOWER Drawer Dimensions

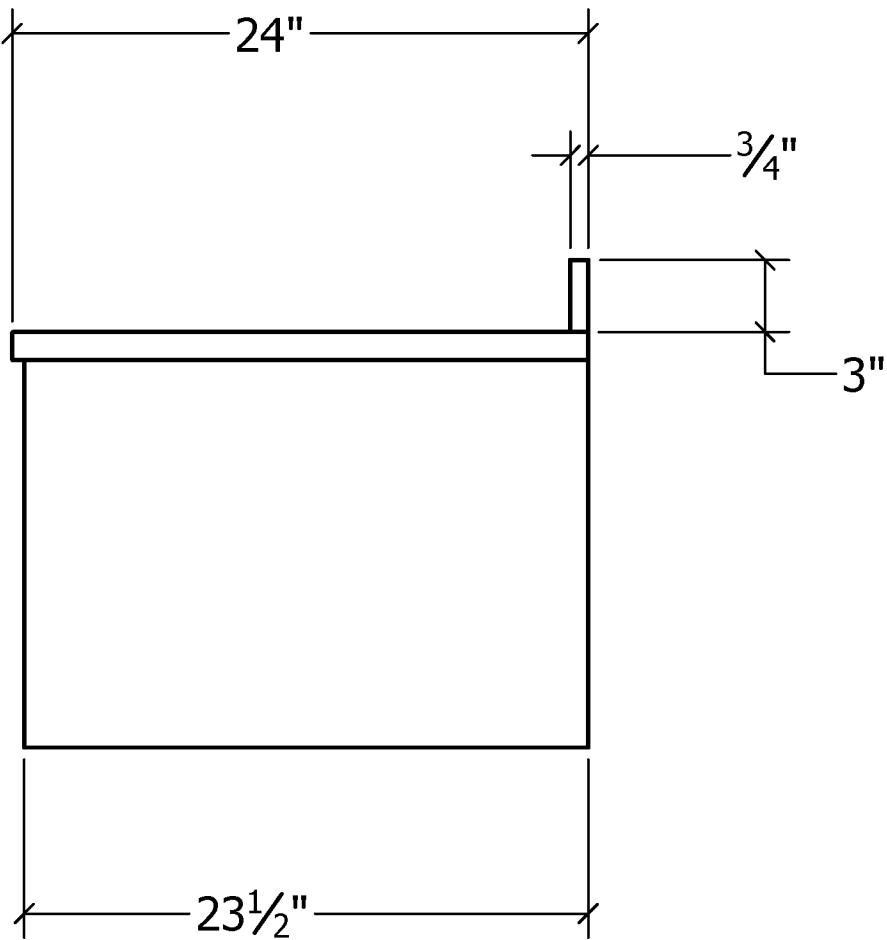
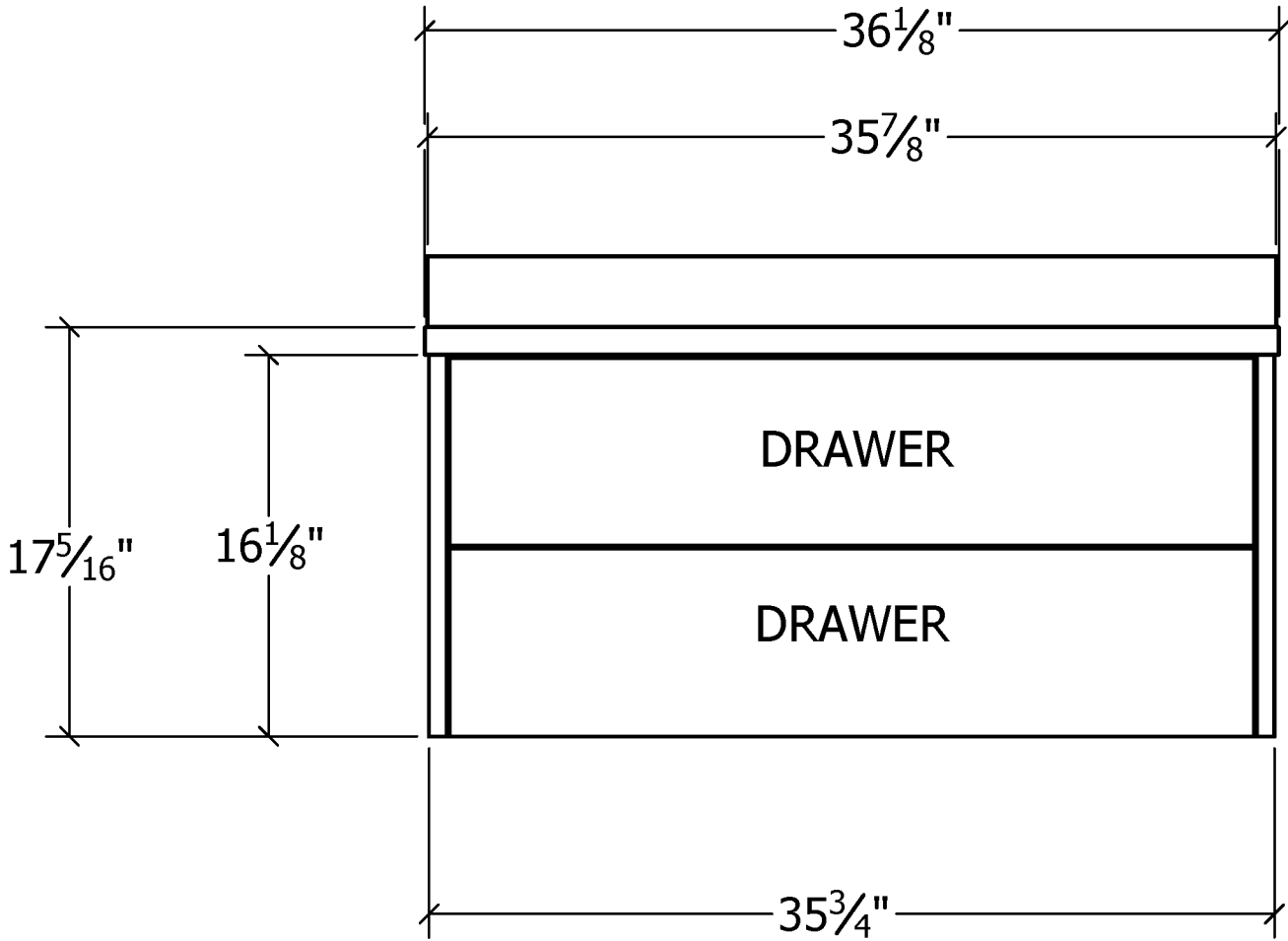


SECTION VIEW LOOKING FROM SIDE



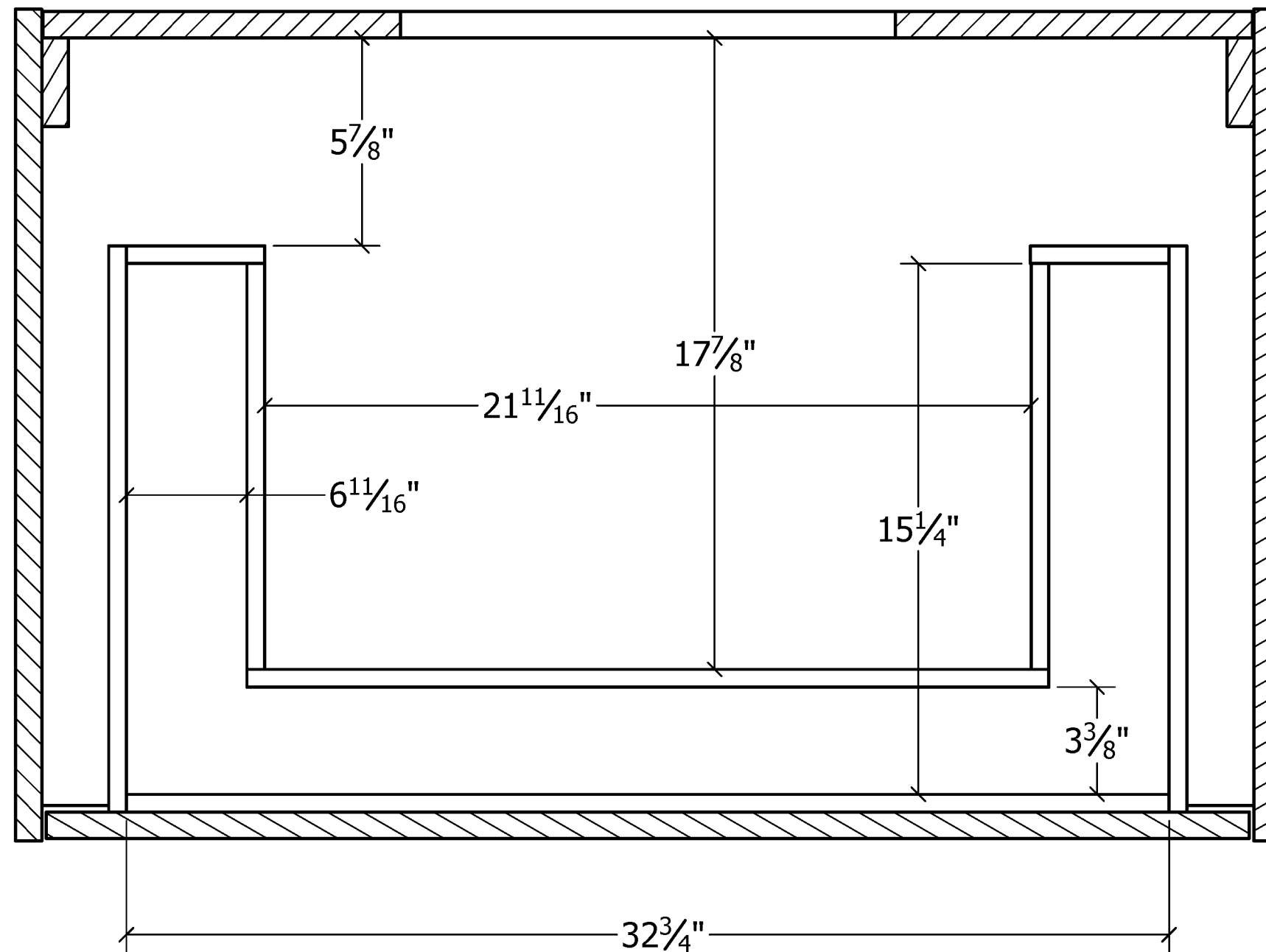
REINSTALL DRAWERS





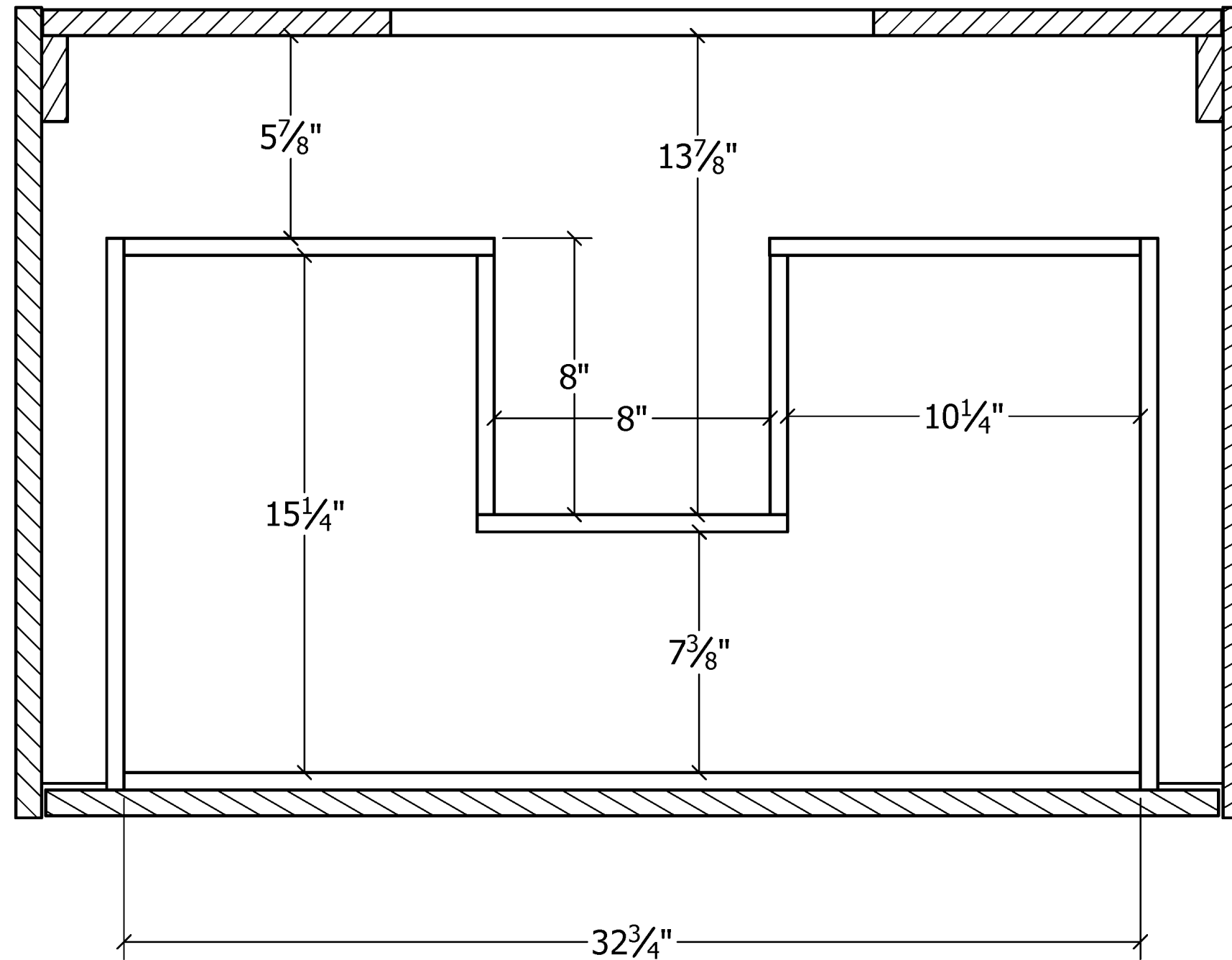
SECTION VIEW LOOKING DOWN

Showing UPPER Drawer Dimensions

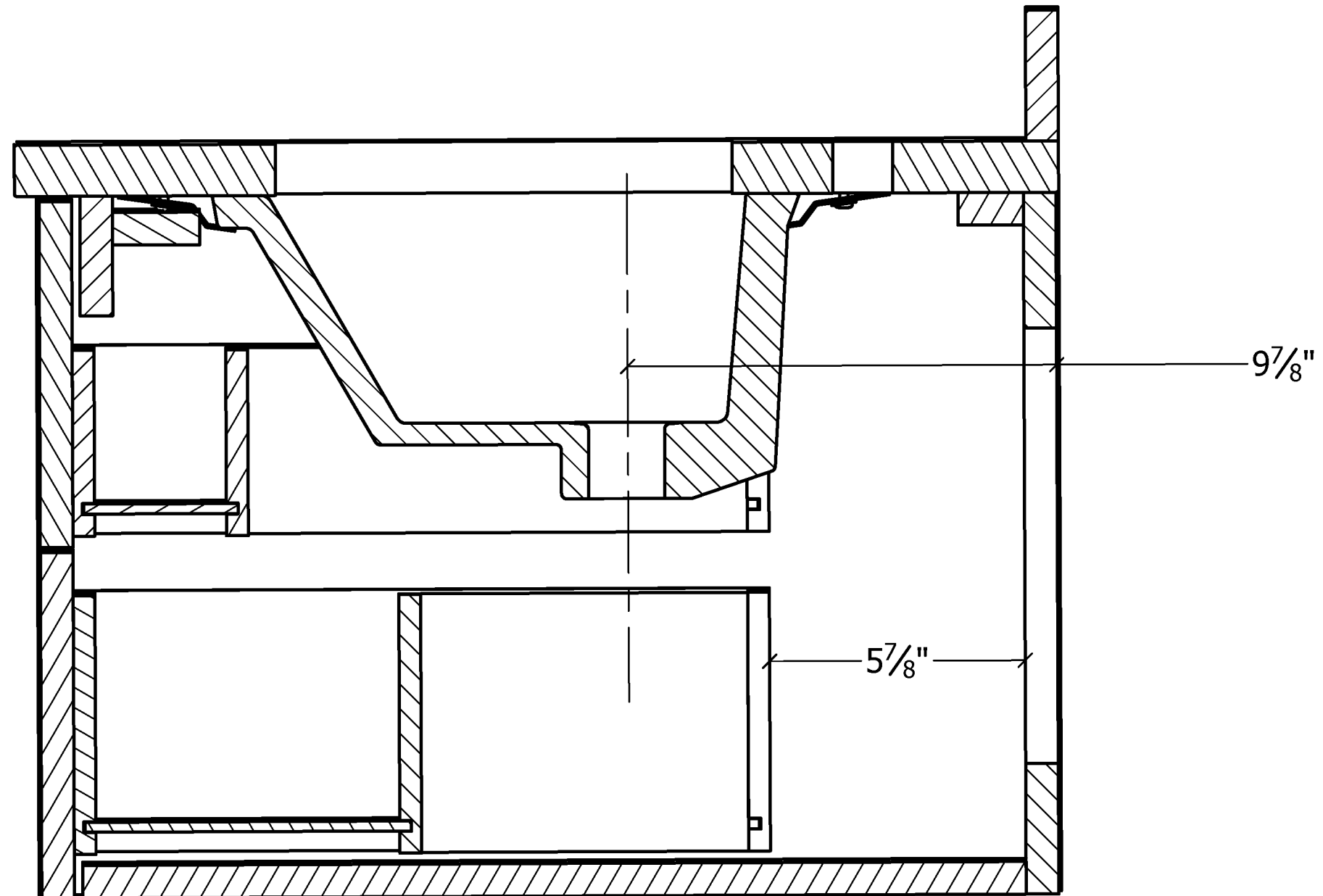


SECTION VIEW LOOKING DOWN

Showing LOWER Drawer Dimensions

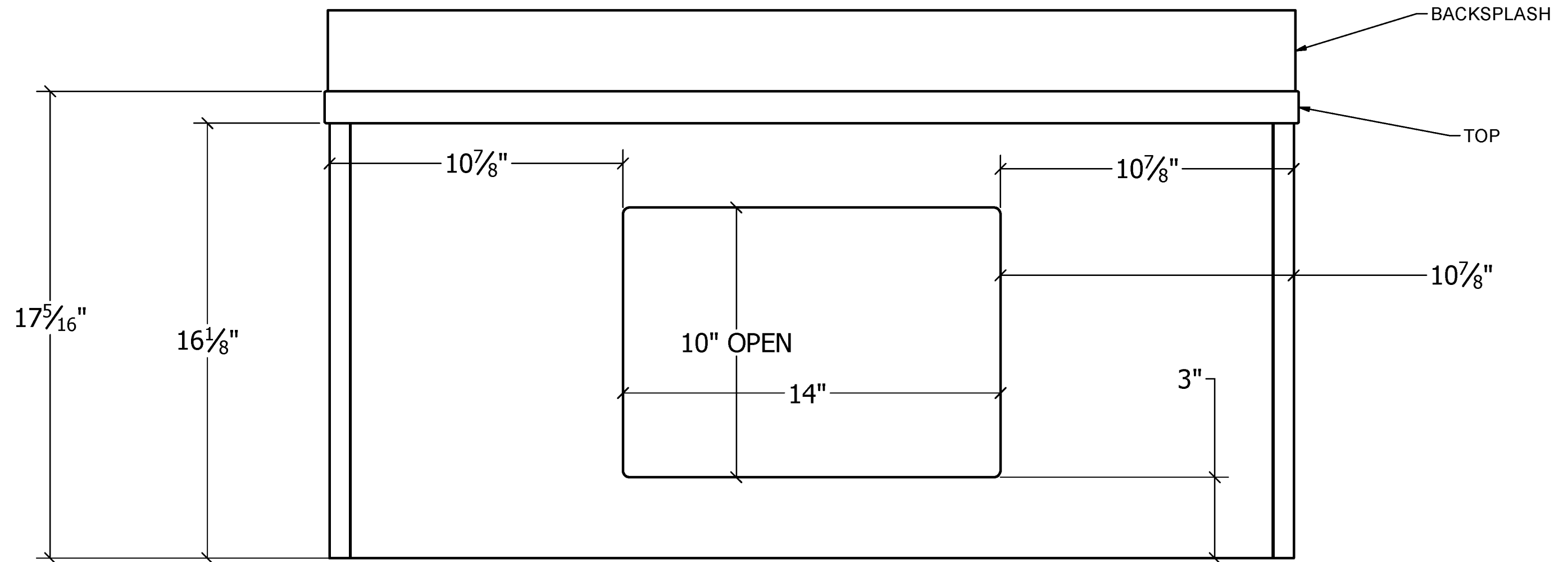


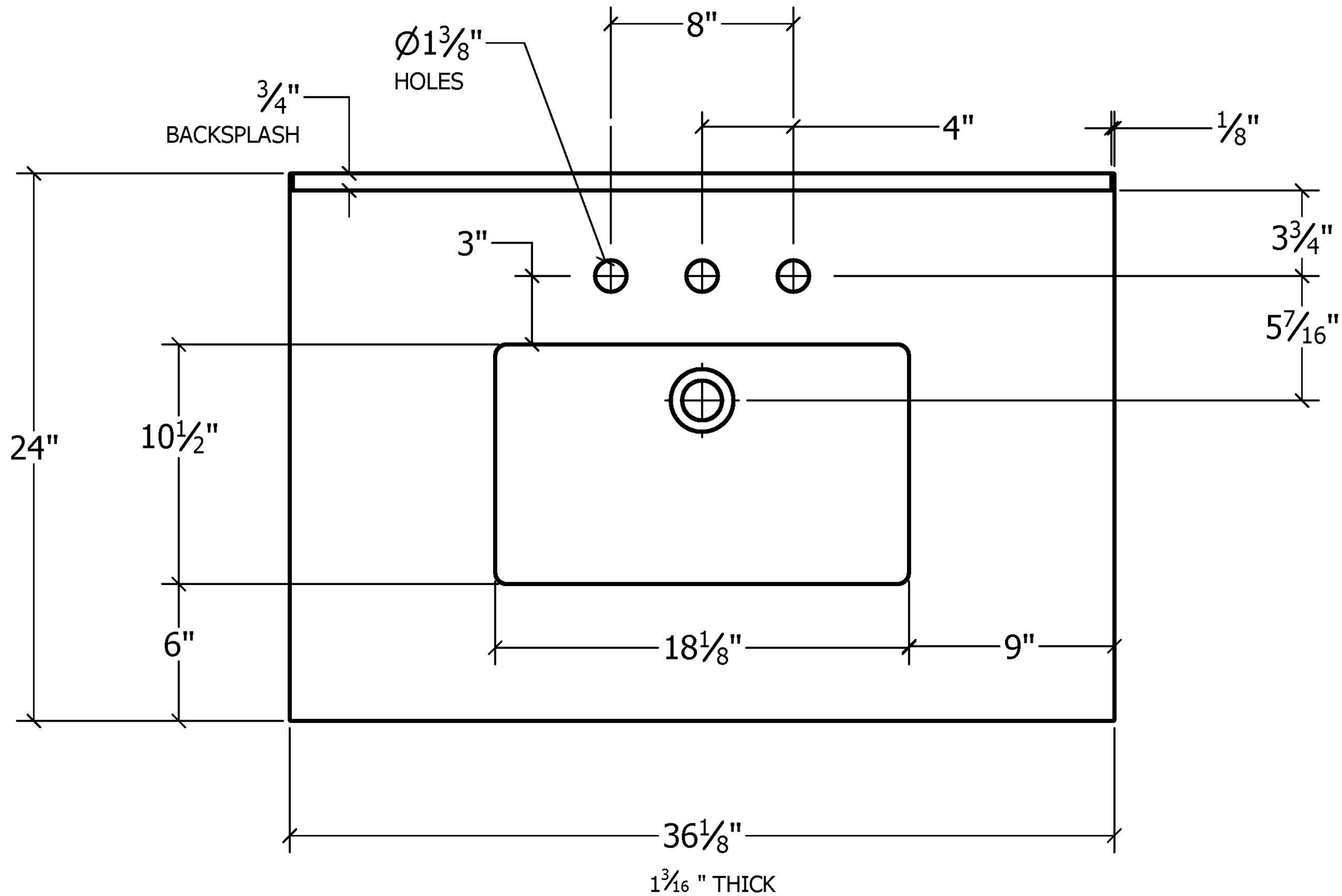
SECTION VIEW LOOKING FROM SIDE



BACK PLUMBING ACCESS CUTOUT

Back is $\frac{3}{4}$ " thick plywood





REJUVENATION

www.Rejuvenation.com

Specifications:

Installation:	Undercounter
Interior Dimensions:	18 5/8" w x 11" d x 5 1/2" h
Exterior Dimensions:	20 3/4" w x 13 1/2" d x 7 1/4" h
Material:	Porcelain
Weight:	18 lbs
Overflow:	Yes
Finishes:	001 - White
Faucet Holes:	n/a
Cutout Size:	18 1/8" x 10 1/2" (template available upon request)
Drain Hole Size:	Ø 1 3/4"



Features:

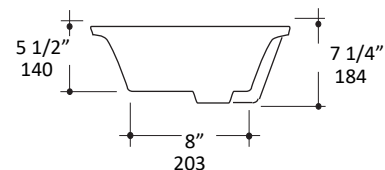
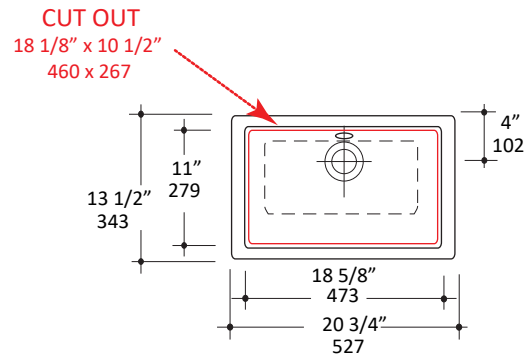
- Porcelain sink with overflow
- Most standard American drains can also be used
- Single glazed (unglazed exterior)
- Current cut-out template can be requested

Codes + Standards:

- Meets and exceeds applicable national codes and standards



compliant when installed to specific requirements of this regulation



Rejuvenation Teak Vanity Care Guide

Our teak vanities are crafted with responsibly sourced teak, featuring a natural finish with no stain or sealer. Because we use the highest-quality, grade A teak, it produces its own natural oils that keep the wood in great condition. When exposed to the elements or direct sunlight, it will slowly age from an original golden honey color to a soft light gray.

Cleaning & Maintenance

Teak is resistant to water and rot, however mildew accumulation can occur depending on the average humidity of your bathroom. Clean your teak vanity as needed using a cleaner specifically crafted for teak wood. For a natural DIY solution, try mixing 1 cup of vinegar with 1 gallon of warm water.

1. Start by dampening the surface of the teak wood with clean water. Apply your cleaning solution with a soft cloth and let it soak into the wood for 10-15 minutes. Note: Do not use any scrubbing pads, metal brushes, or rough sponges that can scratch the wood's surface.
2. Next, lightly rinse the wood with clean water and a fresh cloth or sponge.
3. For tough stains, try using a plastic-bristled brush (not metal). A small amount of bleach or oxalic acid may be necessary for dark stains. If it doesn't come up with a cleaning mixture, lightly sand the stained area with a super fine grit sandpaper. Note: Sanding will remove any sealer or patina on the wood's surface.