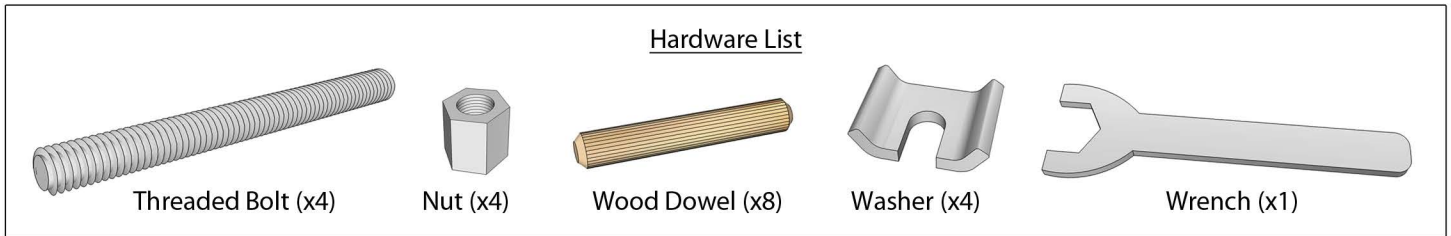


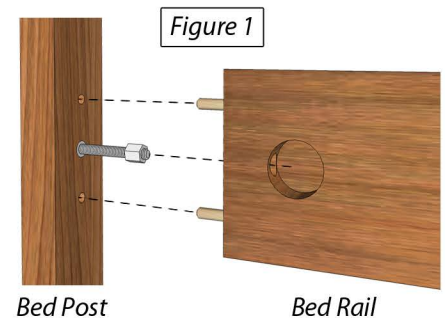
REJUVENATION[®]

HARDWARE INSTRUCTIONS

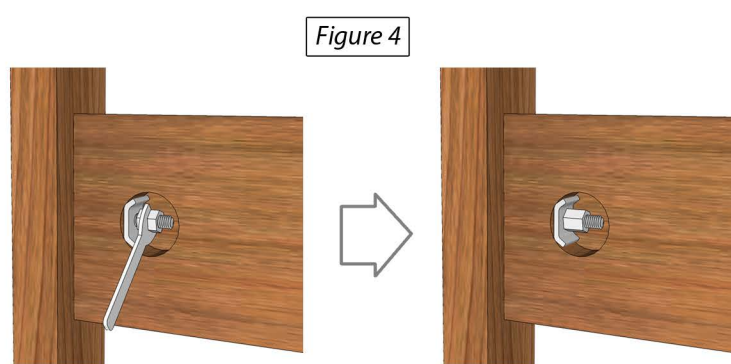
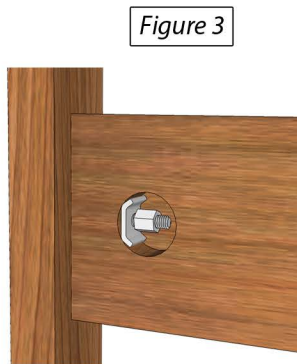
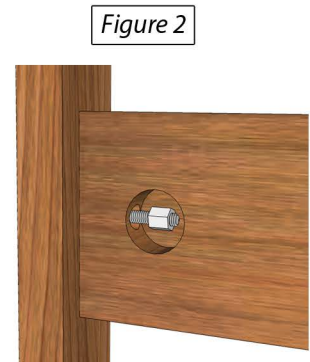
How to Attach Bed Rails



- 1) Screw the threaded stud into the center threaded insert until it stops. See *Figure 1*.
- 2) Screw the nut 3-6 turns onto the end of the threaded stud. See *Figure 1*.
- 3) Insert the wood dowels into the top and bottom holes on the end of the rail. See *Figure 1*.



- 4) Align the center hole in the end of the rail with the nut and threaded stud in the bed post. See *Figure 1*.
- 5) Slide the rail over the nut and guide the dowels into the mating holes in the bed post. See *Figure 2*.
- 6) Place the curved washer in behind the nut. See *Figure 3*.
- 7) Tighten the nut with the wrench provided. The nut should be snug but not overly tight. See *Figure 4*.



REJUVENATION[®]

HARDWARE INSTRUCTIONS

Center Support

Hardware List

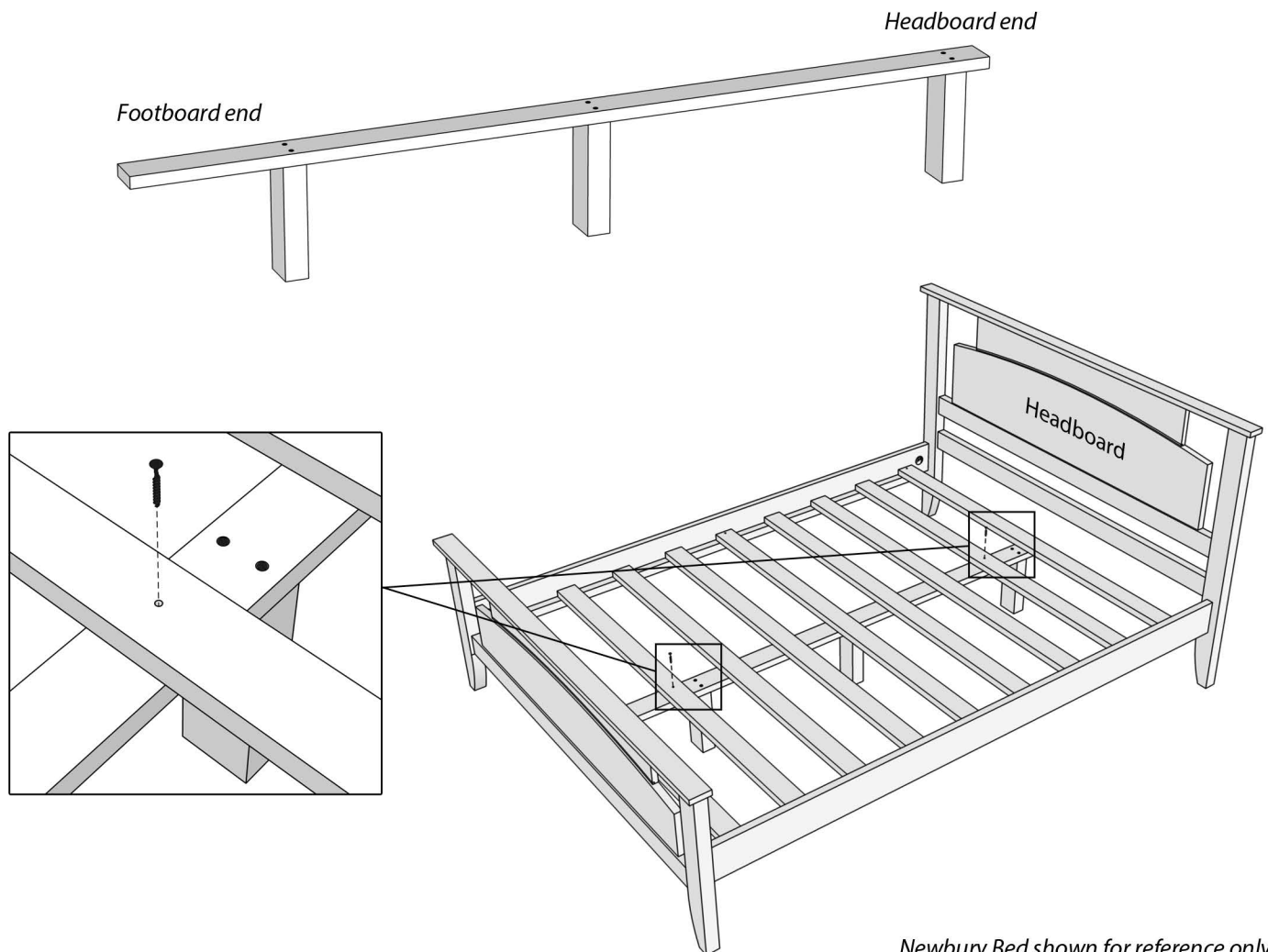
screw is actual size



1 1/2" Screw (x2)
extra screws may be included

ATTENTION  Do Not Assemble with Power Tools

- 1) Center the support assembly under the bed slats. Make sure that the leg closest to the end of the support assembly is on the headboard end of the bed.
- 2) Use the 2 - 1 1/2" screws to attach two of the bed slats to both ends of the support.



Newbury Bed shown for reference only