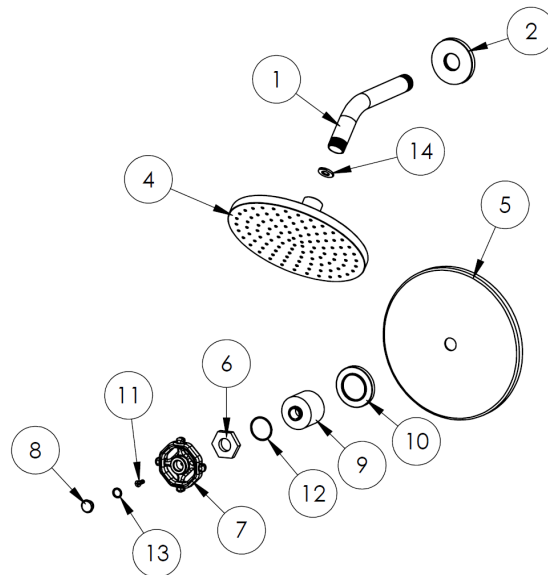


FEATURES

- Diaphragm cartridge maintains water temperature within $\pm 2^\circ$
- Compensates for water pressure fluctuations preventing scalding
- Flow rate: 5-7 gpm at 80 psi
- Solid brass construction
- Warranty:
 - Limited lifetime warranty (residential use)
 - One year (commercial use)
- Standard finishes:
 - polished chrome
 - satin nickel
 - polished nickel
 - rustic brass
- Listed by IAPMO, CSA, NSF, & other municipalities
- Shipping weight (lbs.): 15.7
- Shipping dimensions(in.): 12 x 22.5 x13

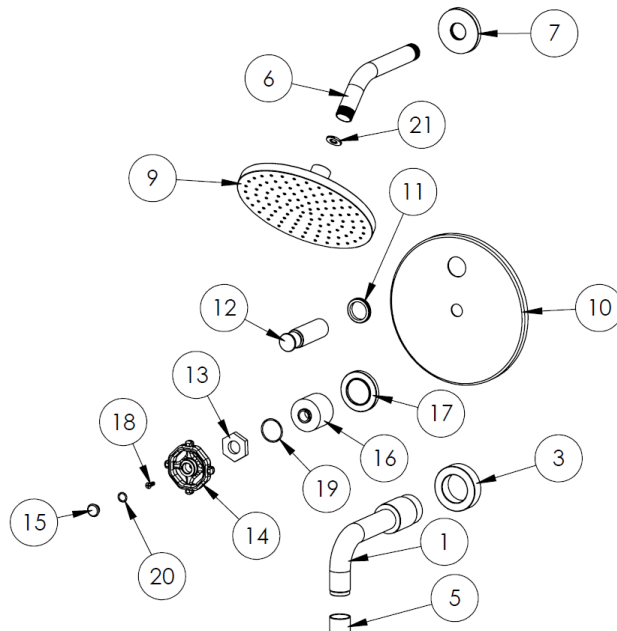
Shower Kit:

ITEM NO.	PART NUMBER	QTY.
1	SS-403TRAF-ARM SHOWER ARM	1
2	SS-403TRAF-FLNG SHOWER FLANGE	1
4	SH-TIT50 SHOWER HEAD	1
5	FACEPLATE	1
6	TL6-ESC-NUT	1
7	TL6-CRSS-HNDL	1
8	TL6-CRSS-HNDL-CAP	1
9	CL14SM-ESC	1
10	CL14-ESC-RING	1
11	CR-FHMS 0.164-32x0.5x0.5-S	1
12	AS568 - 023	1
13	AS568 - 012	1
14	NEOPERL FLOW REGULATOR	1



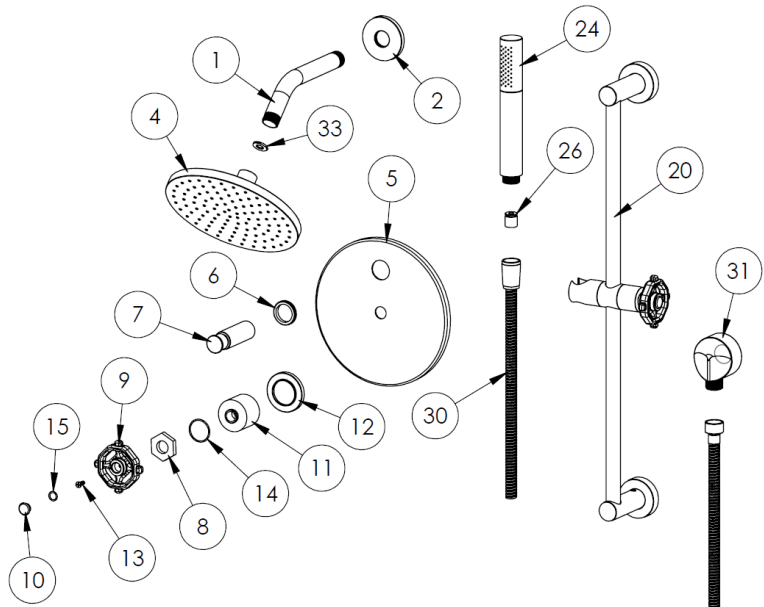
Shower/Tub Kit:

ITEM NO.	PART NUMBER	QTY.
1	TBSPT-24-SPT	1
3	24-3 TUB SPOUT BASE OUTER	1
5	TBSPT-24-AERTR-SHLL	1
6	SS-403TRAF-ARM SHOWER ARM	1
7	SS-403TRAF-FLNG SHOWER FLANGE	1
9	SH-TIT50 SHOWER HEAD	1
10	FACEPLATE	1
11	DIVERTER GROMMET	1
12	DIVERTER KNOB	1
13	TL6-ESC-NUT	1
14	TL6-CRSS-HNDL	1
15	TL6-CRSS-HNDL-CAP	1
16	CL14SM-ESC	1
17	CL14-ESC-RING	1
18	CR-FHMS 0.164-32x0.5x0.5-S	1
19	AS568 - 023	1
20	AS568 - 012	1
21	NEOPERL FLOW REGULATOR	1



Shower/Hand Shower Kit:

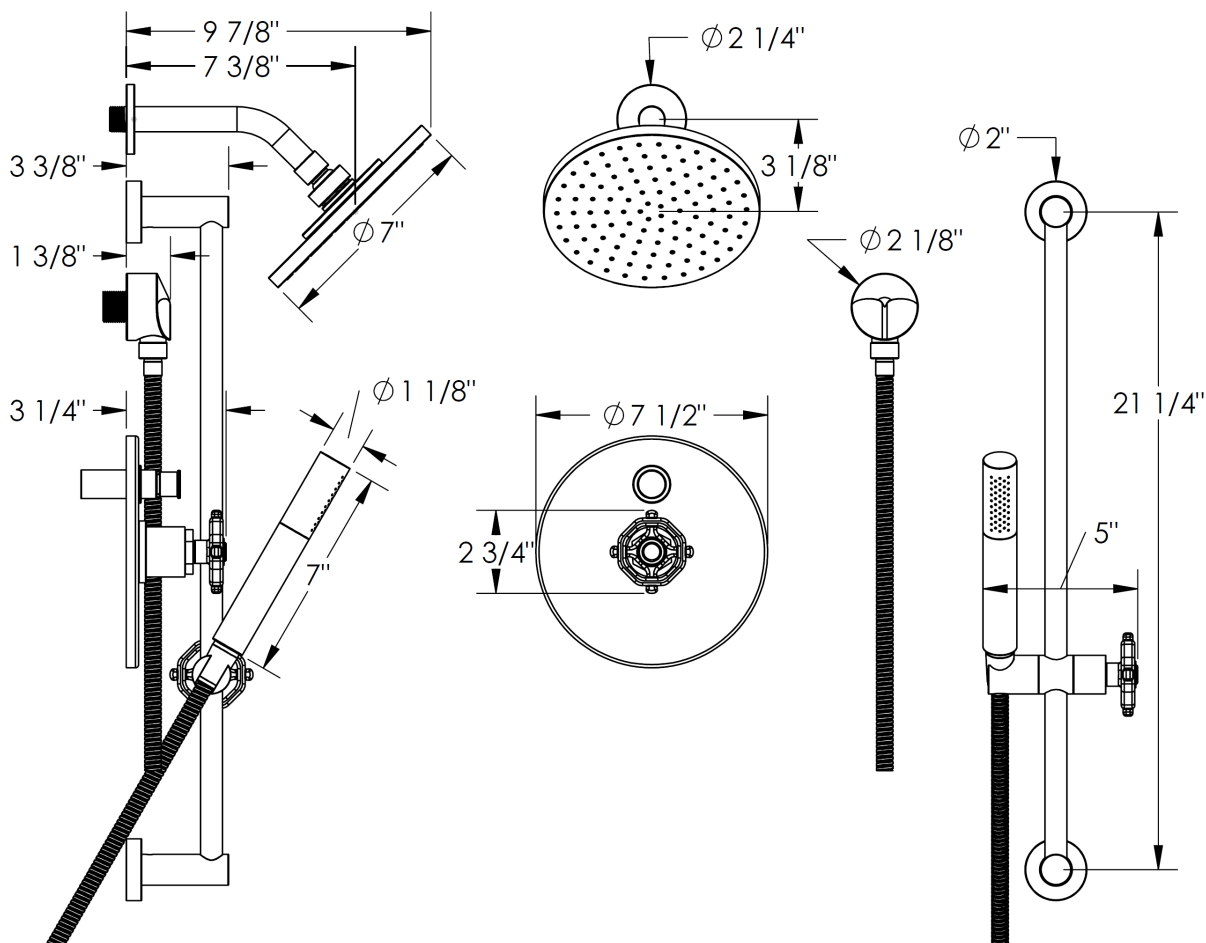
ITEM NO.	PART NUMBER	QTY.
1	SS-403TRAF-ARM SHOWER ARM	1
2	SS-403TRAF-FLNG SHOWER FLANGE	1
4	SH-TIT50 SHOWER HEAD	1
5	FACEPLATE	1
6	DIVERTER GROMMET	1
7	DIVERTER KNOB	1
8	TL6-ESC-NUT	2
9	TL6-CRSS-HNDL	2
10	TL6-CRSS-HNDL-CAP	2
11	CL14SM-ESC	2
12	CL14-ESC-RING	2
13	CR-FHMS 0.164-32x0.5x0.5-S	2
14	AS568 - 023	2
15	AS568 - 012	2
20	WALL POSITIONING BAR	1
24	SH-TIT30 HAND SHOWER	1
26	NEOPERL FLOW REGULATOR	1
30	DS-4079 HAND SHOWER HOSE	1
31	ELB-8001	1
33	NEOPERL FLOW REGULATOR	1



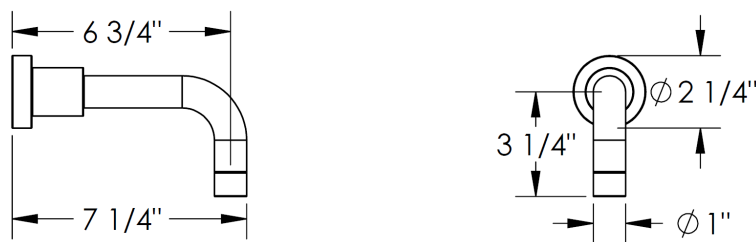
Installation Instructions:

- 1. Ensure valve is properly installed according to Installation Sheet provided with valve.**
Note: Specification from finished wall to tip of broached stem is 2 7/8".
- 2. Fit faceplate onto valve.**
Note: for tub/shower valves with diverter, screw diverter knob onto diverter stem.
- 3. Insert handle trim onto stem broach so that escutcheon rests against faceplate and slight clearance is left for handle to rotate freely.**
Note: When fitting handle it may be necessary to shorten broach stem and/or threaded nipple to eliminate gap between handle and escutcheon.
- 4. Install the hand shower assembly (if applicable).** Thread wall elbow onto 1/2" male NPT nipple. Secure mounting kits onto wall. Connect conical shape connection of hose onto hand shower and round connection onto elbow.

Shower & Hand Shower Dimensions:



Tub Spout Dimensions:



IMPORTANT INSTALLATION INFORMATION

- USE TEFLON TAPE OR PIPE SEALANT FOR THREADED CONNECTIONS
- DO NOT USE PLUMBER'S PUTTY ON ANY OF THE BRASS COMPONENTS
This will cause the finish to tarnish and void the warranty. A non-corrosive Alkoxy Silicone is recommended.
- DURING SWEATING OF LINES DO NOT OVERHEAT CASTING
Overheating may cause damage to internal mechanism
- COPPER ADAPTORS MAY BE REQUIRED TO COMPLETE YOUR INSTALLATION

For technical support, please call 888-401-1900