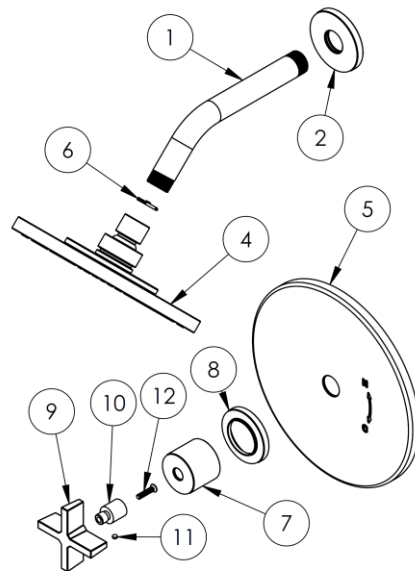


FEATURES

- Diaphragm cartridge maintains water temperature within $\pm 2^\circ$
- Compensates for water pressure fluctuations preventing scalding
- Flow rate: 5-7 gpm at 80 psi
- Solid brass construction
- Warranty:
 - Limited lifetime warranty (residential use)
 - One year (commercial use)
- Standard finishes:
 - polished chrome
 - satin nickel
 - polished nickel
 - rustic brass
- Listed by IAPMO, CSA, NSF, & other municipalities
- Shipping weight (lbs.): 15.7
- Shipping dimensions(in.): 12 x 22.5 x13

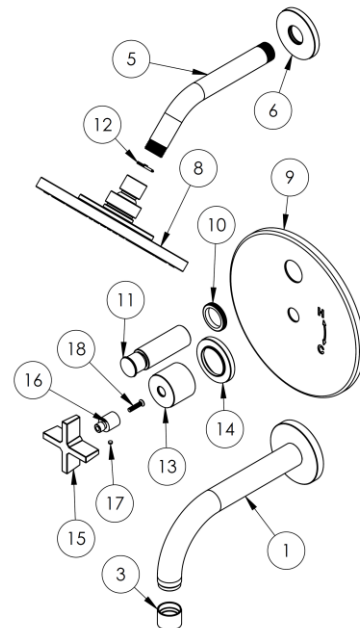
Shower Kit:

ITEM NO.	PART NUMBER	QTY.
1	SS-403TRAF-ARM SHOWER ARM	1
2	SS-403TRAF-FLNG SHOWER FLANGE	1
4	SH-TIT50 SHOWER HEAD	1
5	FACEPLATE	1
6	NEOPERL FLOW REGULATOR	1
7	CL14SM-ESC	1
8	CL14-ESC-RING	1
9	SX-CRSS-HNDL	1
10	CLSX-POST	1
11	SSCONESKT 0.164-32x0.125-HX-N	1
12	CR-FHM1 0.164-32x0.75x0.75-S	1



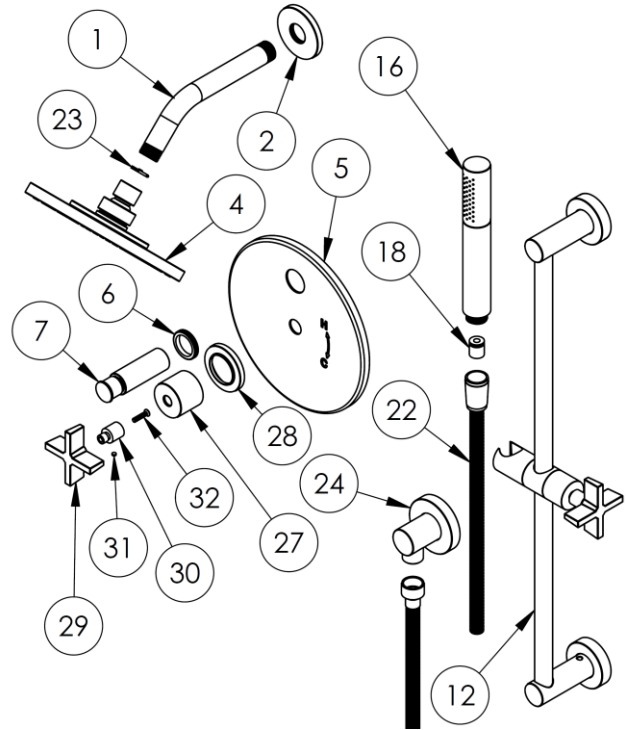
Shower/Tub Kit:

ITEM NO.	PART NUMBER	QTY.
1	TBSPT-22-SPT	1
3	TBSPT-24-AERTR-SHLL	1
5	SS-403AF-ARM SHOWER ARM	1
6	SS-403AF-FLNG SHOWER FLANGE	1
8	SH-TIT50 SHOWER HEAD	1
9	FACEPLATE	1
10	DIVERTER GROMMET	1
11	DIVERTER KNOB	1
12	NEOPERL FLOW REGULATOR	1
13	CL14SM-ESC	1
14	CL14-ESC-RING	1
15	SX-CRSS-HNDL	1
16	CLSX-POST	1
17	SSCONESKT 0.164-32x0.125-HX-N	1
18	CR-FHM1 0.164-32x0.75x0.75-S	1



Shower/Hand Shower Kit:

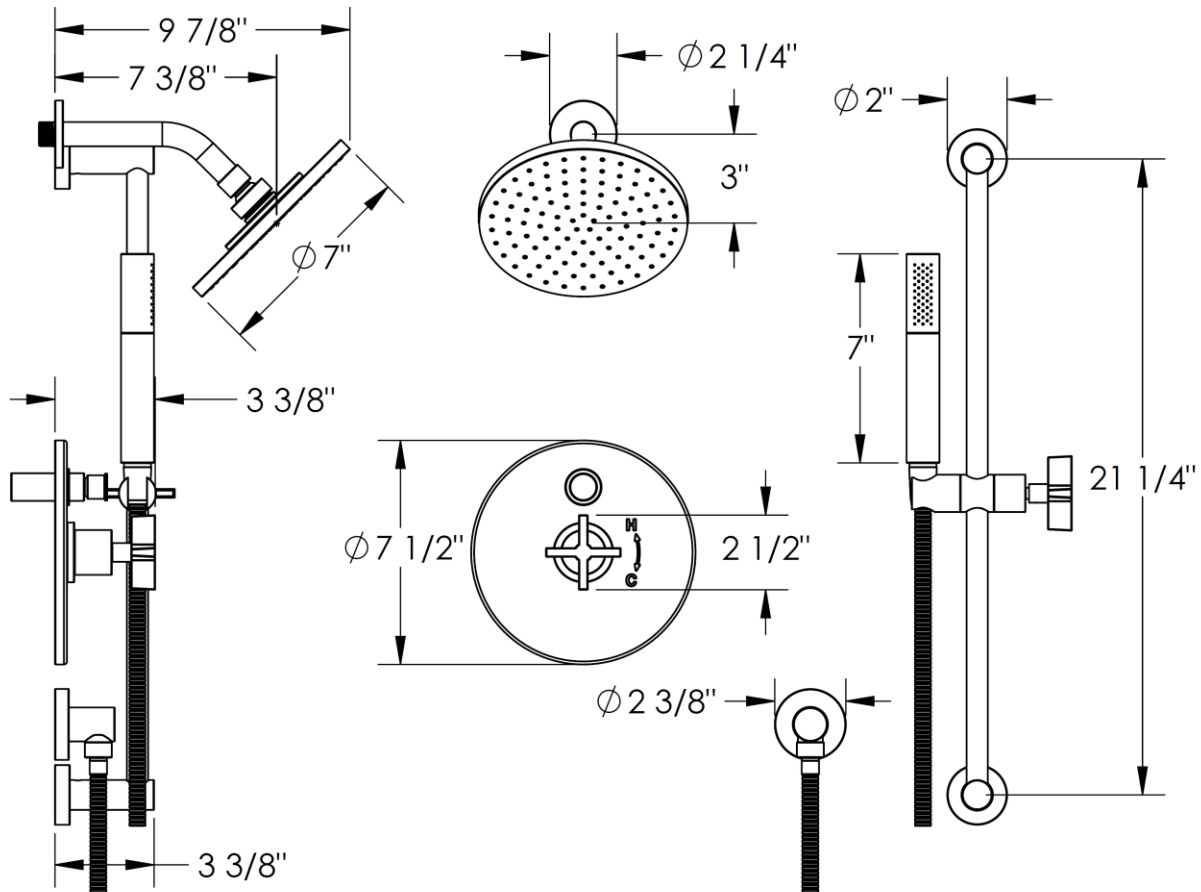
ITEM NO.	PART NUMBER	QTY.
1	SS-403TRAF-ARM SHOWER ARM	1
2	SS-403TRAF-FLNG SHOWER FLANGE	1
4	SH-TIT50 SHOWER HEAD	1
5	FACEPLATE	1
6	DIVERTER GROMMET	1
7	DIVERTER KNOB	1
12	POSITIONING BAR	1
16	SH-TIT30 HAND SHOWER	1
18	NEOPERL FLOW REGULATOR	1
22	DS-4079 HAND SHOWER HOSE	1
23	NEOPERL FLOW REGULATOR	1
24	HAND SHOWER ELBOW	1
27	CL14SM-ESC	1
28	CL14-ESC-RING	1
29	SX-CRSS-HNDL	2
30	CLSX-POST	2
31	SSCONESKT 0.164-32x0.125-HX-N	2
32	CR-FHM1 0.164-32x0.75x0.75-S	2



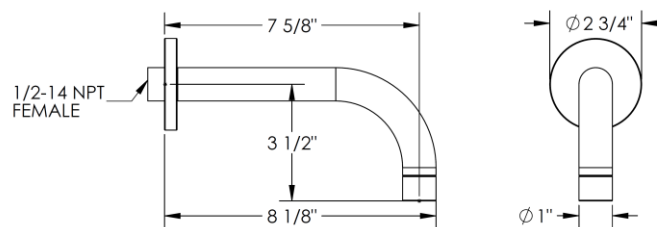
Installation Instructions:

- 1. Ensure valve is properly installed according to Installation Sheet provided with valve.**
Note: Specification from finished wall to tip of broached stem is 3 5/8".
- 2. Fit faceplate onto valve.**
Note: for tub/shower valves with diverter, screw diverter knob onto diverter stem.
- 3. Insert handle trim onto stem broach so that escutcheon rests against faceplate and slight clearance is left for handle to rotate freely.**
Note: When fitting handle it may be necessary to shorten broach stem and/or threaded nipple to eliminate gap between handle and escutcheon.
- 4. Install the hand shower assembly (if applicable).** Thread wall elbow onto 1/2" male NPT nipple. Secure mounting kits onto wall. Connect conical shape connection of hose onto hand shower and round connection onto elbow.

Shower & Hand Shower Dimensions:



Tub Spout Dimensions:



IMPORTANT INSTALLATION INFORMATION

- USE TEFLON TAPE OR PIPE SEALANT FOR THREADED CONNECTIONS
- DO NOT USE PLUMBER'S PUTTY ON ANY OF THE BRASS COMPONENTS
This will cause the finish to tarnish and void the warranty. A non-corrosive Alkoxy Silicone is recommended.
- DURING SWEATING OF LINES DO NOT OVERHEAT CASTING
Overheating may cause damage to internal mechanism
- COPPER ADAPTORS MAY BE REQUIRED TO COMPLETE YOUR INSTALLATION

For technical support, please call 888-401-1900